



17/197 Pacific Highway Lindfield, NSW

3

1

1

### Modern Renovation

This huge three bedroom apartment is quietly positioned away from Pacific Highway and overlooks the internal courtyard of lawn and landscaped gardens. The top floor position ensures privacy and leafy views from the two sunny balconies facing north and east. Fully renovated, this apartment is ready to move in and enjoy.

**Price:** Contact Agent  
**Council Rates:** \$325.00 p/q  
**Water Rates:** \$177.00 p/q  
**Strata Rates:** \$660.00 p/q



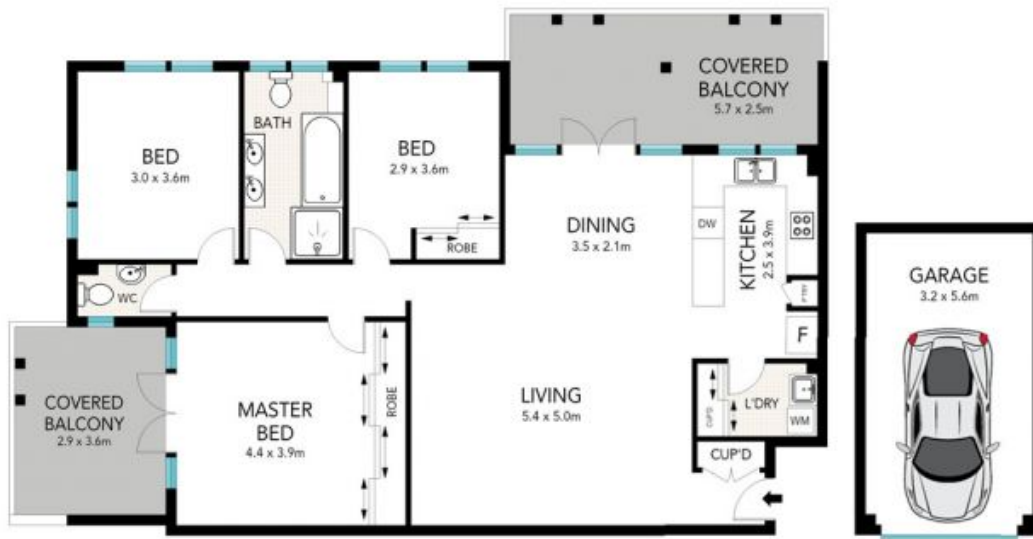
**Steven Kourdis**

0402 555 675



**Belinda Shearer**

0404 479 199



All the information provided has been collected from reliable sources but cannot be guaranteed interested persons should rely on their own enquiries. All dimensions are approximate and indica

Internal area approx (Without Garage) : 113 m<sup>2</sup>  
 Balconies approx : 25 m<sup>2</sup>  
 Garage area approx : 18 m<sup>2</sup>  
 Total area approx : 156 m<sup>2</sup>



17/197 PACIFIC HIGHWAY, LINDFIELD