



42 Bromborough Road Roseville, NSW



### Serene Family home with infinite options

Loved for many years, this exceptionally well maintained family home is offered to the market for the first time. Wonderfully positioned in a tightly held cul-de-sac, its peaceful surrounds culminate in Roseville's vibrant Loyal Henry Park just metres from the door.

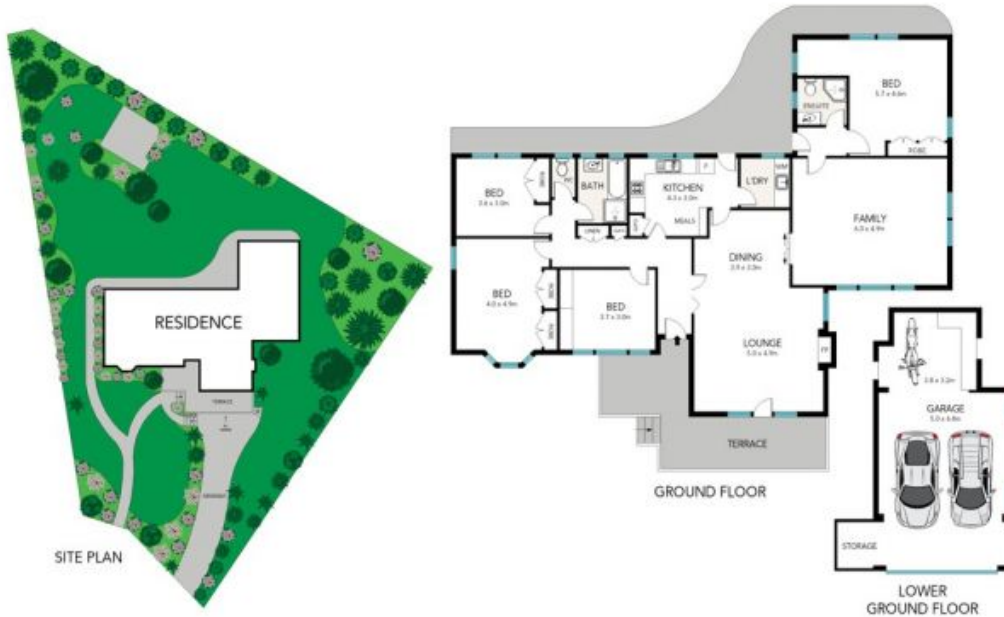
Price:

Contact agent



**Jill Henry**

0416 493 555



0 1 2 3 4 5 SCALE METRES

All the information provided has been collected from reliable sources but cannot be guaranteed for accuracy, interested persons should rely on their own enquiries. All dimensions are approximate and indicative only.

Internal Area appx: 215m<sup>2</sup>



42 BROMBOROUGH ROAD, ROSEVILLE