



7 Acacia Road Seaforth, NSW

3 2 2

Weatherboard charmer on a huge block with views and potential

From an elevated setting above the street, you'll love the charm and character of this home that reveals panoramic views from Castle Cove to Middle Harbour and the Chatswood skyline. With the generous land size of approx. 918sqm, a serene setting and spectacular sunsets, it offers boundless amounts of potential.

Price: Auction Guide: \$1,950,000



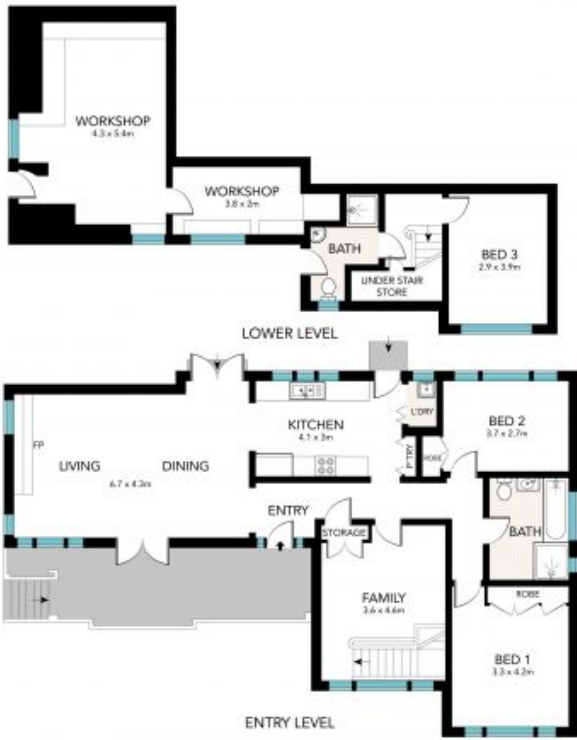
Maria Cassarino

0411 818 093



Phillip Wright

0488 586 860



0 1 2 3 4 5
SCALE (METRES)

All the information provided has been collected from reliable sources but cannot be guaranteed for accuracy. Interested parties should rely on their own enquiries. All dimensions are approximate and indicative only.



7 Acacia Road, Seaforth