



10/30A The Crescent Dee Why, NSW



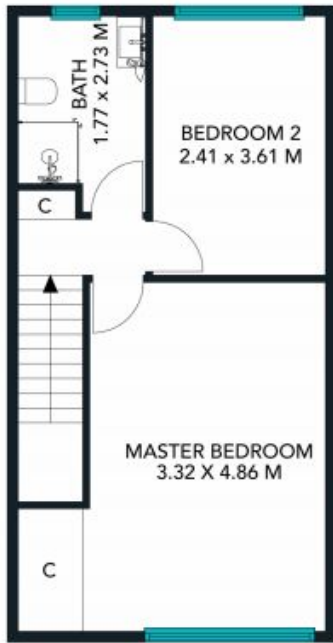
Beachside townhouse

Who wouldn't love a six-minute stroll to the beach for a daily swim? It's all part of the package with this tidy townhouse; immaculate and ready to move in now, its good bones and superb location are an excellent foundation for creative updates.

Price: \$900,000
Council Rates: \$382.53 p/q
Water Rates: \$171.96 p/q
Strata Rates: \$903.75 p/q

Stone Mona Vale

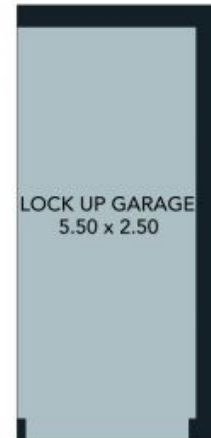
02 8030 8549



FIRST FLOOR



GROUND FLOOR



LOCK UP GARAGE
5.50 x 2.50

The floor plan is not to scale. Measurements are indicative and in metres.





FIRST FLOOR

GROUND FLOOR



The interior style and design of this floor plan is designed for inspiration purposes to show the living spaces. It is not an exact replica of the furniture and fittings in the home.

30A The Crescent , Dee Why
stonerealestate.com.au

Produced by DIAKRIT