

43/29 The Crescent Manly, NSW



Prime waterfront position

Sensationally set on the foreshores of Manly Cove with only two minutes walk to the beach and Manly Wharf, this solid two bedroom apartment presents a unique opportunity that also offers the potential to improve and further capitalise on this envious position.

Price: \$875 per week

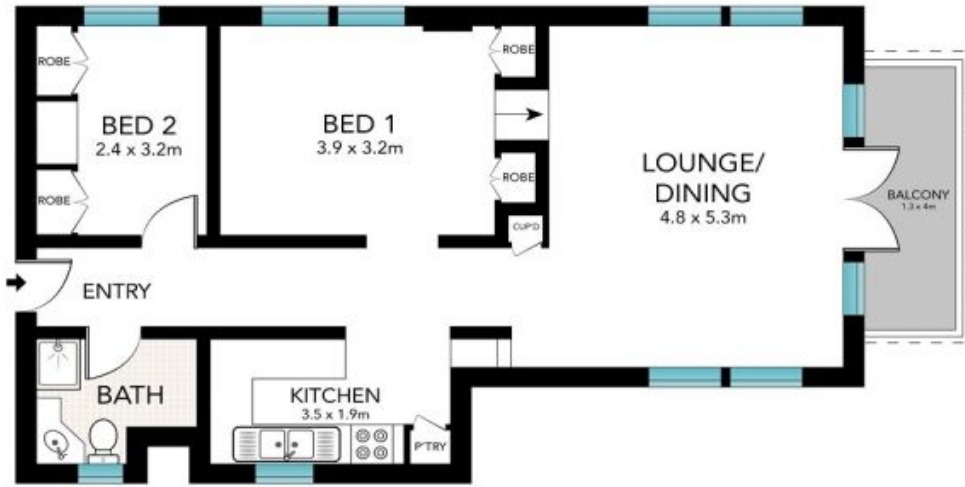
Bond: \$3,500

Available Date: 22/11/2017

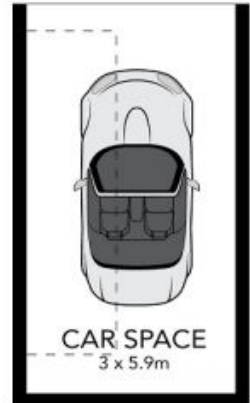


Zoe Thackeray

0449 167 420



LEVEL FOUR



STREET LEVEL



All the information provided has been collected from reliable sources but cannot be guaranteed for accuracy. Interested persons should rely on their own enquiries. All dimensions are approximate and indicative only.



43/29 THE CRESCENT, MANLY

