



2/22 The Crescent Manly, NSW

2 

1 

### Vogue decor in boutique building by the harbour

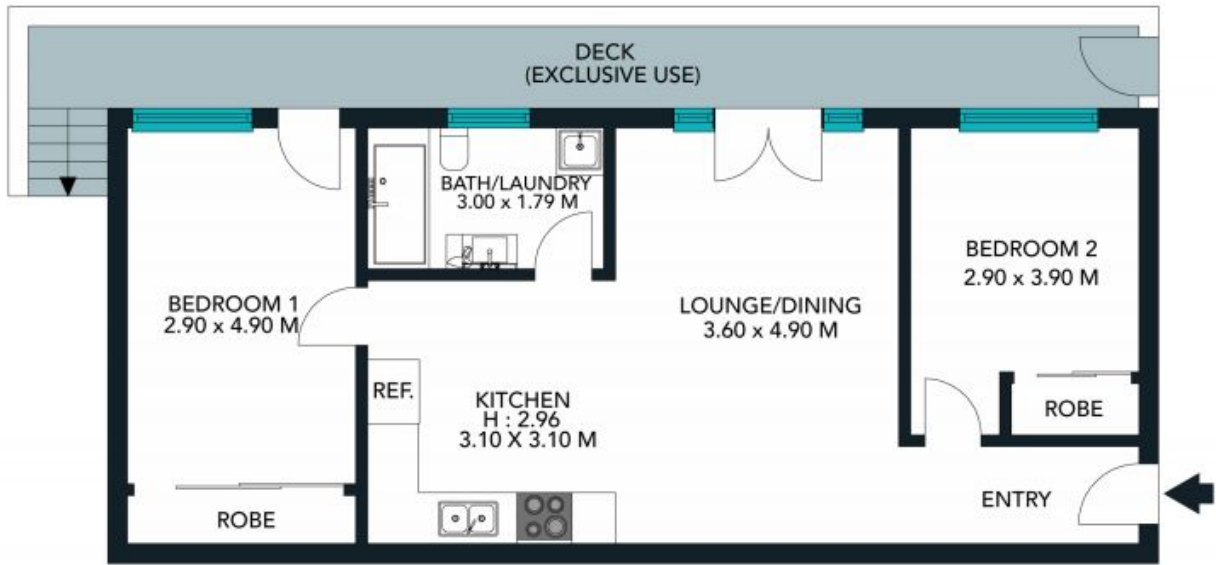
Move straight into this beautifully styled apartment and live a lifestyle of supreme luxury and convenience literally footsteps from the harbour. Nestled at the rear of 'Danesbury', this boutique block of five is only a stone's throw from Manly's hub.

Price: \$1,100,000



**Candice Cattell**

0417 311 777



The floor plan is not to scale. Measurements are indicative and in metres.



The interior style and design of this floor plan is designed for inspiration purposes to show the living spaces. It is not an exact replica of the furniture and fittings in the home.

2/22 The Crescent, Manly  
stonerealestate.com.au

Produced by DIAKRIT