



20/37 East Esplanade Manly, NSW

2 

1 

2 

Harbourfront lifestyle pad with wondrous water views

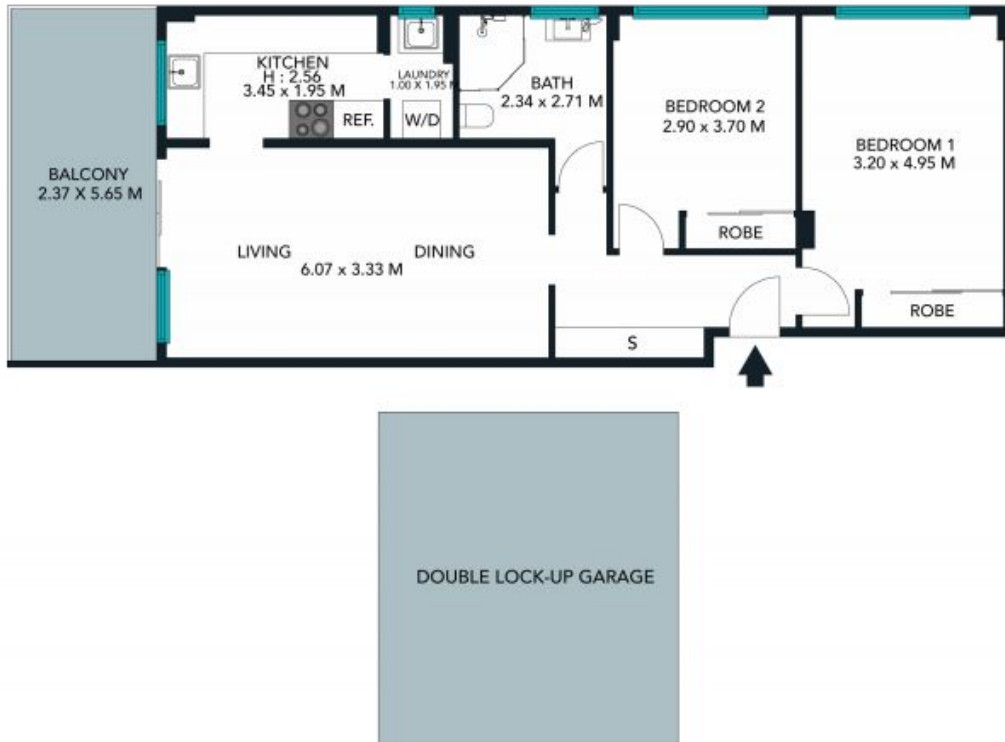
With Manly Cove and the wharf across the road and mesmerising harbour scenes as your backdrop, this exceptional apartment promises a lifestyle beyond compare. It showcases bright, spacious and modern interiors plus a giant terrace by the harbour.

Price: \$1,750,000



Candice Cattell

0417 311 777



The floor plan is not to scale. Measurements are indicative and in metres.





The interior style and design of this floor plan is designed for inspiration purposes to show the living spaces. It is not an exact replica of the furniture and fittings in the home.



20/37 East Esplanade, Manly
stonerealestate.com.au

Produced by DIAKRIT