

21/37 East Esplanade Manly, NSW



Amazing wharf-side lifestyle pad with harbour views

From its soaring sixth floor vantage point directly opposite Manly Wharf, this fabulous apartment reveals sparkling harbour views as well as scenes over the village to the ocean. Blessed with bright and spacious interiors and a giant sunlit entertainers' terrace, it is perfectly placed to enjoy Manly's cosmopolitan cuisine scene and world-famous beaches.

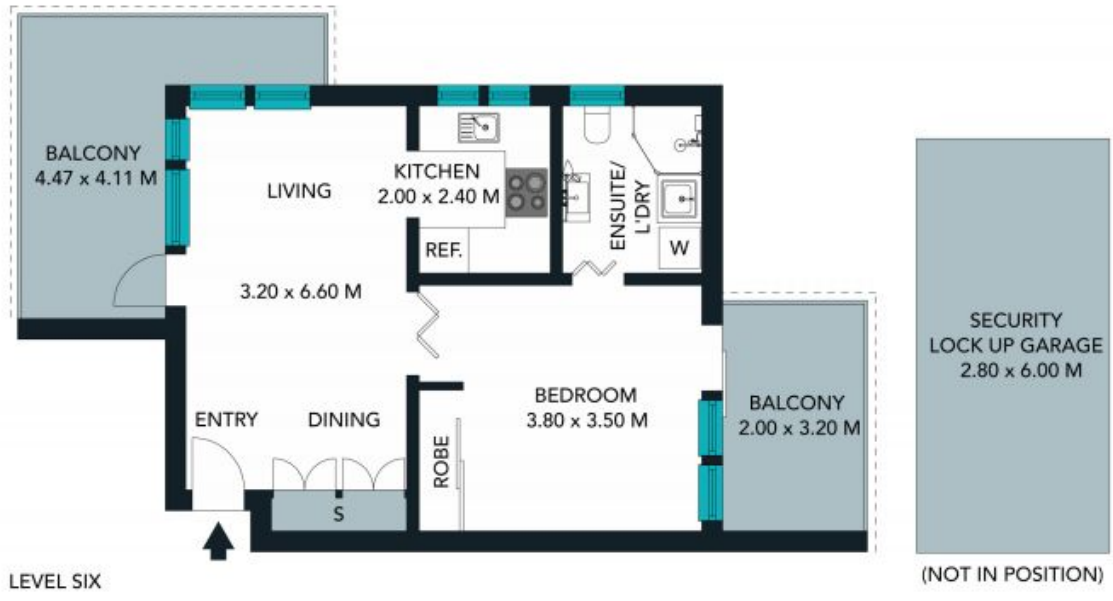
Price:

Price Guide \$1,150,000



Candice Cattell

0417 311 777



The floor plan is not to scale. Measurements are indicative and in metres.





LEVEL SIX



The interior style and design of this floor plan is designed for inspiration purposes to show the living spaces. It is not an exact replica of the furniture and fittings in the home.

21/37 East Esplanade, Manly
stonerealestate.com.au

Produced by DIAKRIT