

605/15 Bayswater Road POTTS POINT, NSW



Dynamic contemporary haven in 'The Hampton'

A contemporary blend of function and style, this north/west corner apartment reveals an intelligent design, optimising natural light and living space. Situated in an ultra convenient location offering an exclusive lifestyle address, a stroll from the city. A great investment opportunity.

- Attractive secure foyer entry with concierge and lift access
- Ultra-modern open plan layout for relaxed living and dining
- Streamlined CaesarStone kitchen boasts Smeg gas appliances
- Cleverly defined bedroom space with island built-in wardrobe
- Mosaic tiled monochrome bathroom with separate bathtub
- Quality inclusions throughout and a neutral colour scheme
- Concealed laundry, hardwood floors, only one common wall
- Smart entry point for young homebuyers and astute investors

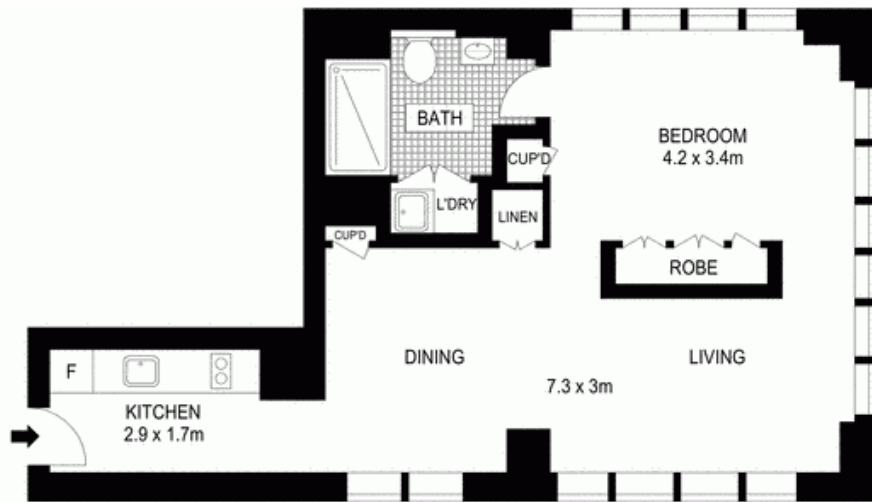
Price:

Price guide over \$525,000



Phillip Wright

0488 586 860



LEVEL SIX



Scale in metres. Indicative only. Dimensions are approximate. All information contained herein is gathered from sources we believe to be reliable. However we cannot guarantee its accuracy and interested persons should rely on their own enquiries.



605/15 Bayswater Road, Potts Point

McGrath