

59 Ocean Beach Drive Shellharbour, NSW

4 

3 

2 

Sea Change

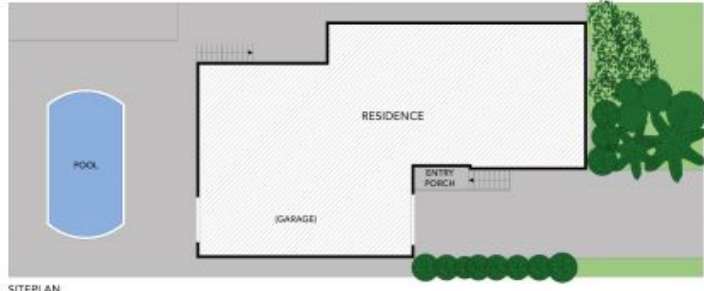
This home is a light filled haven of style and sophistication, boasting the highest quality finishes and meticulous attention to detail throughout. With its large open plan design and generous proportions this home is ideal for today's modern lifestyles.

Price: \$980,000

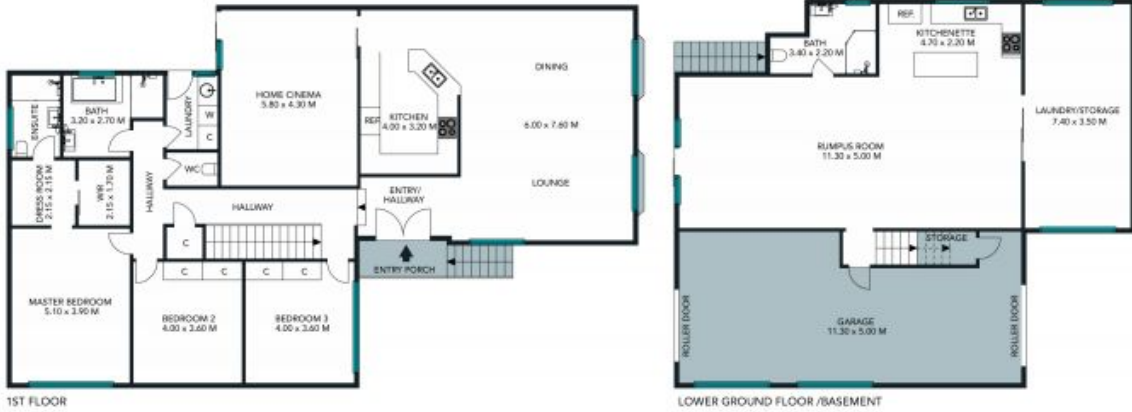


Paul Piacentin

0411 754 884



SITEPLAN



1ST FLOOR

LOWER GROUND FLOOR /BASEMENT



TOTAL LAND AREA : 590 SQM
TOTAL LIVING AREA : 320 SQM

The site plan and floor plan is not to scale. Measurements are indicative and in metres. Bushes and trees are placed for illustration purposes only.

59 Ocean Beach Drive, Shellharbour
stonerealestate.com.au

Produced by DIAKRIT



1ST FLOOR



LOWER GROUND FLOOR /BASEMENT



The interior style and design of this floor plan is designed for inspiration purposes to show the living spaces. It is not an exact replica of the furniture and fittings in the home.

59 Ocean Beach Drive, Shellharbour
stonerealestate.com.au

Produced by **DIAKRIT**