



67 Tamarind Drive Cordeaux Heights, NSW

4

2

2

### Family Bliss

Catching elevated views across rolling green hills, this substantial family home offers a great choice of living spaces and outdoor areas to enjoy. With a relaxed community feel and generous proportions throughout make it highly appealing in a family oriented locale.

**Price:** \$840,000



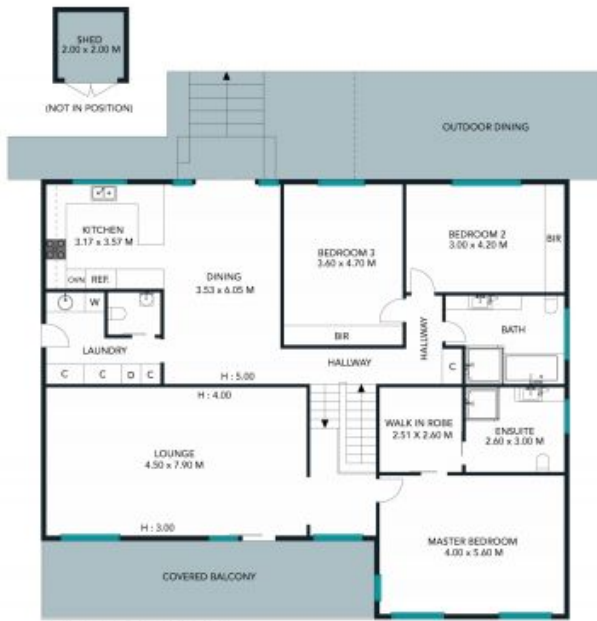
**Paul Piacentin**

0411 754 884



**Michael Farina**

0421 522 713



SECOND FLOOR



FIRST FLOOR



TOTAL LAND AREA : 740 SQM  
 TOTAL LIVING AREA : 259 SQM

The site plan and floor plan are not to scale; measurements are indicative and in metres. Bushes and trees are placed for illustration purposes. Plans should not be relied on. Interested parties should make and rely on their own enquiries.

67 Tamarind Drive, Cordeaux Heights  
 stonerealestate.com.au

Produced by DIAKRIT



SECOND FLOOR



FIRST FLOOR

The floor plan is not to scale; measurements are indicative and in metres. All features included in this 3D plan are for inspiration purposes only.  
This is not an exact replica of the property or the position of exterior elements. Plans should not be relied on. Interested parties should make and rely on their own enquiries.



67 Tamarind Drive, Cordeaux Heights  
stonerealestate.com.au

Produced by DIAKRIT