

68 Bambara Crescent Beecroft, NSW



### Architect Designed home on 746sqm of land

Spacious, light and airy, this architect-designed home is a private family retreat with a relaxing indoor-outdoor atmosphere. It overlooks a serene bushland reserve, and is close to village shops, schools and transport.

Price: \$1,500,000



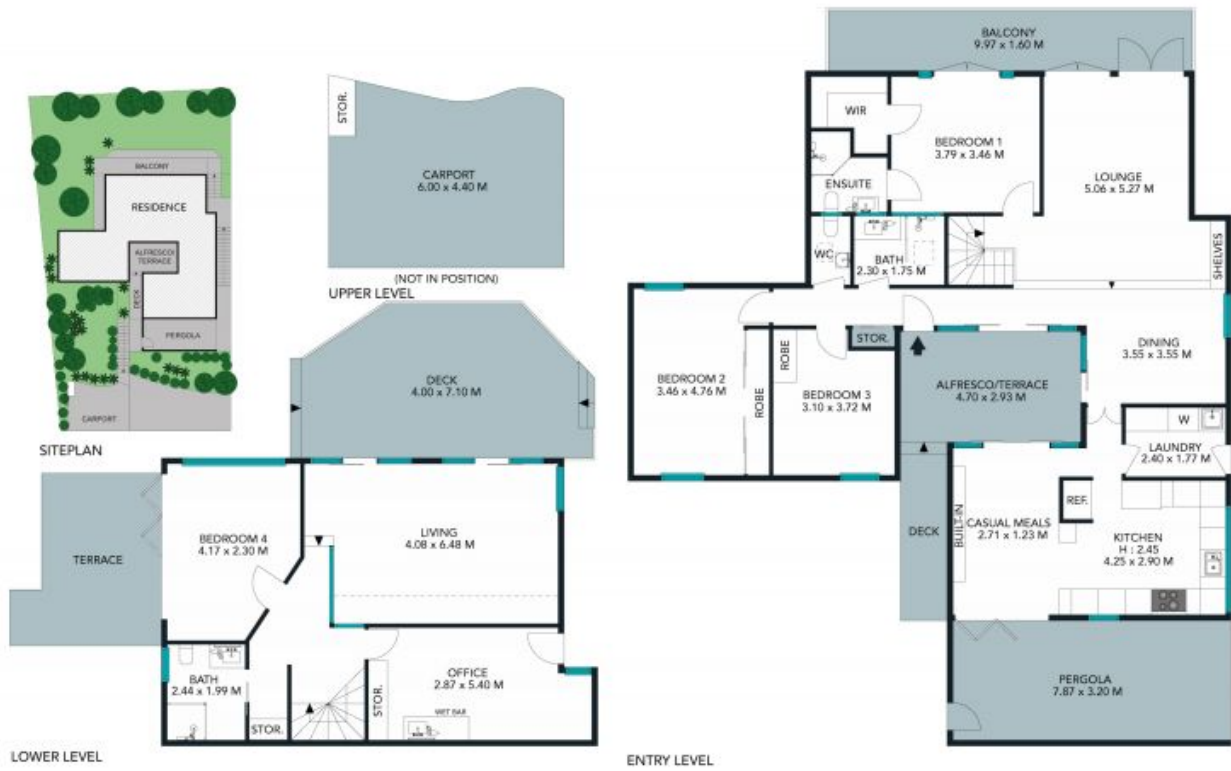
**Kevin Dearlove**

0403 338 302



**James Ramsay**

0420 665 913



The site plan and floor plan are not to scale, measurements are indicative and in metres. Bushes and trees are placed for illustration purposes. Plans should not be relied on. Interested parties should make and rely on their own enquiries.





LOWER LEVEL

UPPER LEVEL

ENTRY LEVEL



The floor plan is not to scale; measurements are indicative and in metres. All features included in this 3D plan are for inspiration purposes only. This is not an exact replica of the property or the position of exterior elements. Plans should not be relied on. Interested parties should make and rely on their own enquiries.

**68 Bambara Crescent, Beecroft**  
stonerealestate.com.au

Produced by DIAKRIT