



20/58 Epping Road Lane Cove, NSW

2

1

1

An ideal entry level or investment solution

This bright, well presented apartment represents the perfect start to buy into a location that ensures ongoing investment performance and lifestyle convenience. Instantly appealing thanks to its quiet position in a solid brick complex, it is ideally situated within strolling distance to Lane Cove's shops and cafe scene.

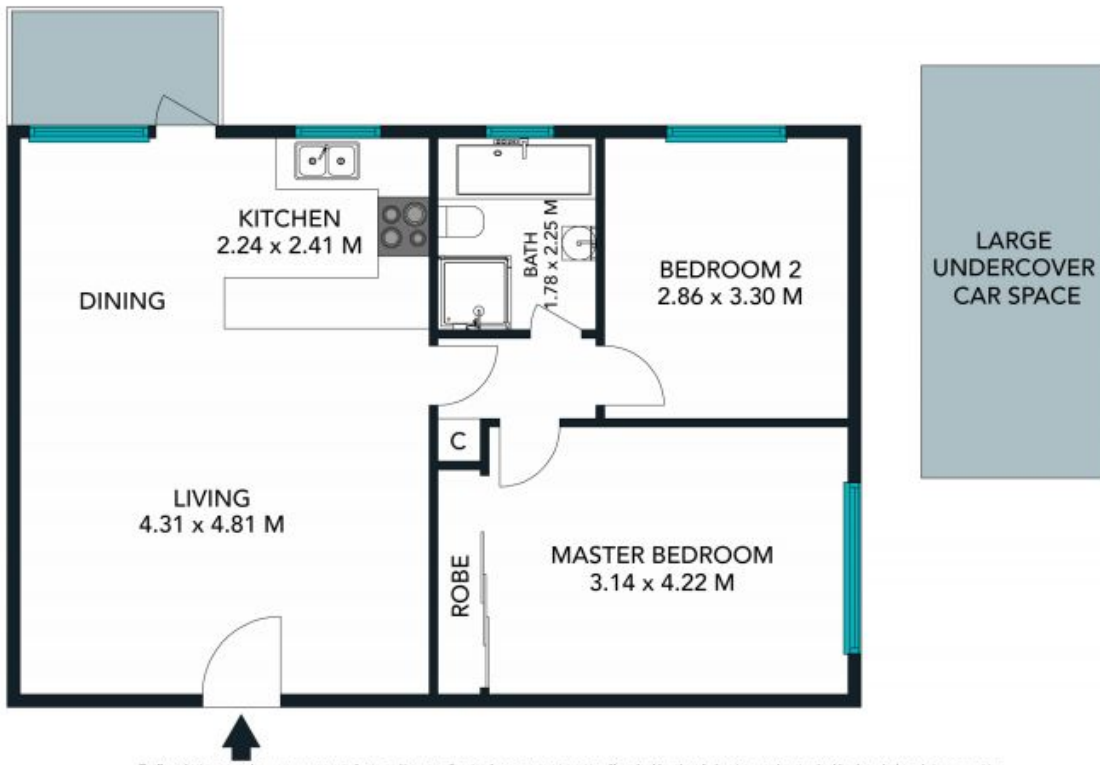
Price:

Auction Guide \$595,000



Terase Calligeros

0418 245 874



The floor plan is not to scale; measurements are indicative and in metres. Exterior elements are not in position. Plans should not be relied on. Interested parties should make and rely on their own enquiries.

20/58 Epping Road, Lane Cove
stonerealestate.com.au

Produced by DIAKRIT



The floor plan is not to scale; measurements are indicative and in metres. All features included in this 3D plan are for inspiration purposes only. This is not an exact replica of the property or the position of exterior elements. Plans should not be relied on. Interested parties should make and rely on their own enquiries.

20/58 Epping Road, Lane Cove
stonerealestate.com.au

Produced by DIAKRIT