

1689 Pittwater Road MONA VALE, NSW

3 2 1

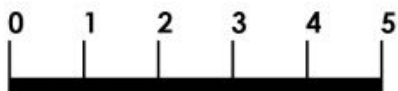
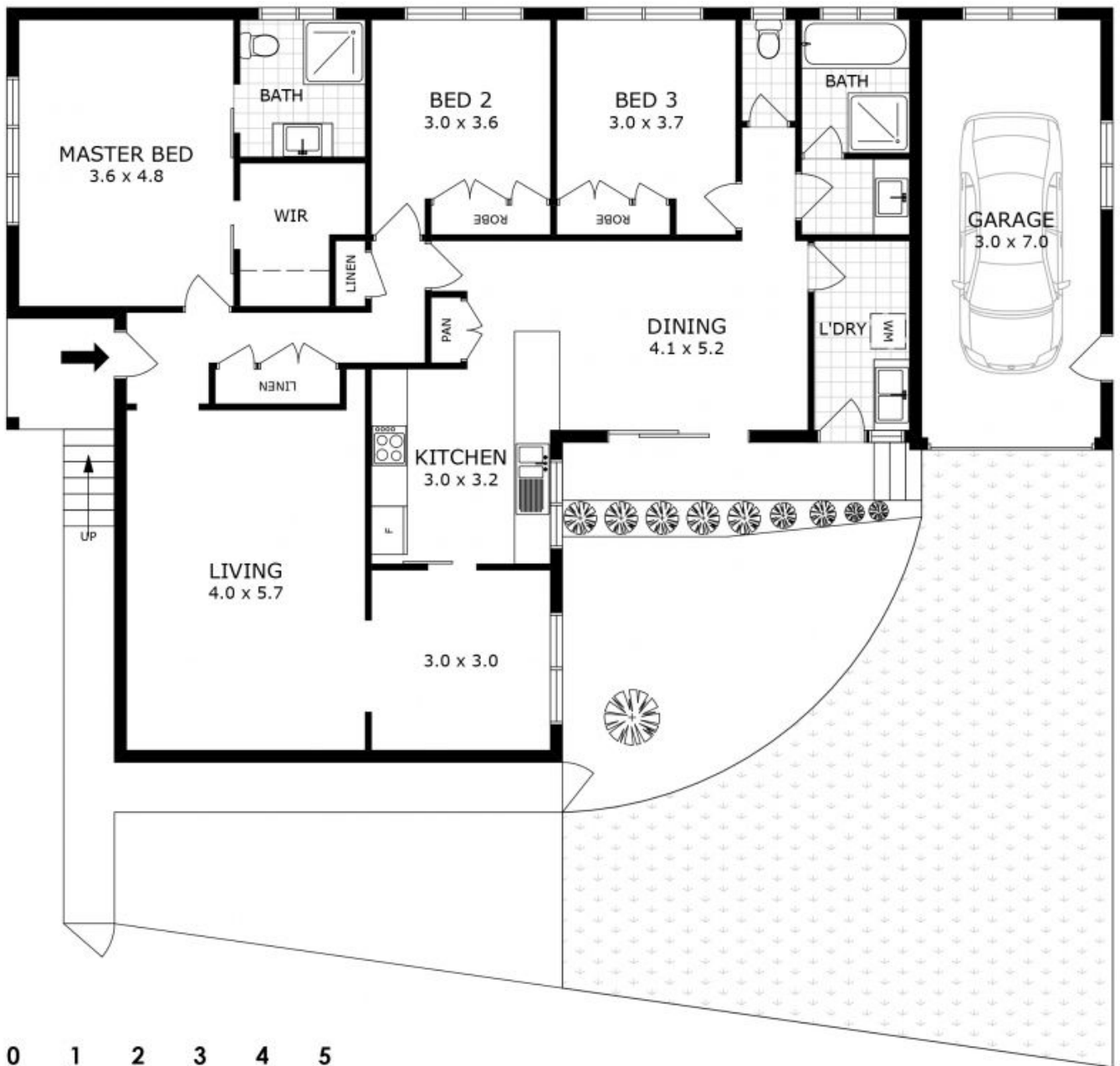
Superb lifestyle package

Set on approx. 560sqm occupying a leafy corner position, this entry level home offers an exciting opportunity for first-time homebuyers, investors and downsizers. Exuding charm and lifestyle appeal with multiple living/entertaining spaces it is sure to impress.

Price: over \$900,000

Stone Mona Vale

02 8030 8549



Scale in metres. Indicative only. Dimensions are approximate. All information contained herein is gathered from sources we believe to be reliable. However we cannot guarantee its accuracy and interested parties should rely on their own enquiries.

Residence - 148 m²
 Garage - 21 m²



1689 Pittwater Road, Mona Vale

