



1/28 Darley Street MONA VALE, NSW

2 1 1

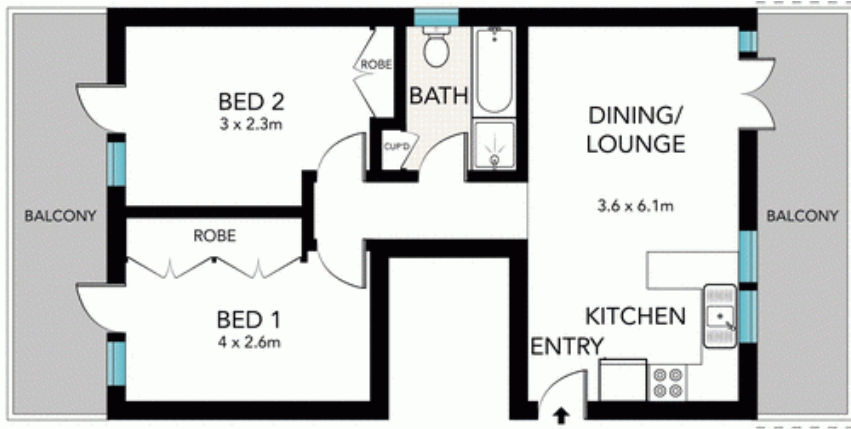
### Deceased Estate - Original beach pad in key location

Perfectly located within a three minute stroll of Mona Vale Beach and seaside cafe's, this near original apartment presents an idyllic blank canvas from which to fashion your masterwork. Boasting bright and airy interiors and two wide balconies that capture sunlight all day long, it offers a rare and prized opportunity to craft your dream beach pad.

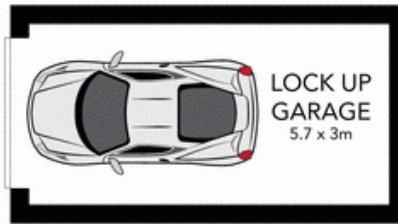
**Price:** Over \$535,000

**Stone Mona Vale**

02 8030 8549



FIRST FLOOR



SCALE (METRES)

All the information provided has been collected from reliable sources but cannot be guaranteed for accuracy. Interested persons should rely on their own enquiries. All dimensions are approximate and indicative only.



1/28 DARLEY ROAD, MONA VALE

