



7 Baroona Road Church Point, NSW



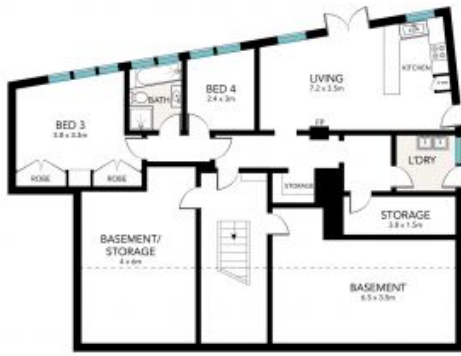
Perfectly positioned original home

This perfectly positioned original home is nestled on a gentle slope overlooking Pittwater and beyond. The flexible floor plan and glorious entertaining spaces that take full advantage of the water views and level back yard. Featuring great car accommodation and storage along with easy access from the street make this one hard to look past. Church Point is one of Sydney's best lifestyle suburbs, offering the best of Pittwater while being closer to the CBD and on an express bus route.

Price: \$2,010,000

Stone Mona Vale

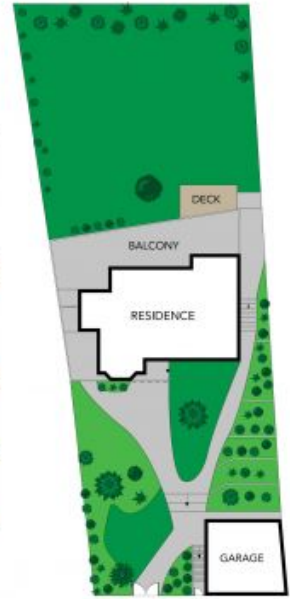
02 8030 8549



LOWER LEVEL



ENTRY LEVEL



All the information provided has been collected from reliable sources but cannot be guaranteed for accuracy. Interested persons should rely on their own enquiries. All dimensions are approximate and indicative only.



7 Baroona Road, Church Point