

21/46 The Crescent DEE WHY, NSW 2 1 1

Private Top Floor Apartment

Bright and airy 2 bedroom, top floor apartment, nestled in a leafy, well maintained complex set back from the road.

Freshly painted and carpeted throughout with soft tones and stylish feature walls.

The spacious north/east facing living opens to a sizable, private balcony, overlooking the inground pool and surrounding leafy district to the ocean.

Both bedrooms are of good size and face due north, filling them with sun for most of the day, with the main boasting mirrored built-in wardrobes.

The bathroom is also newly painted with a separate bath and shower, complimenting the stylishly renovated kitchen with dishwasher and chic features tiles.

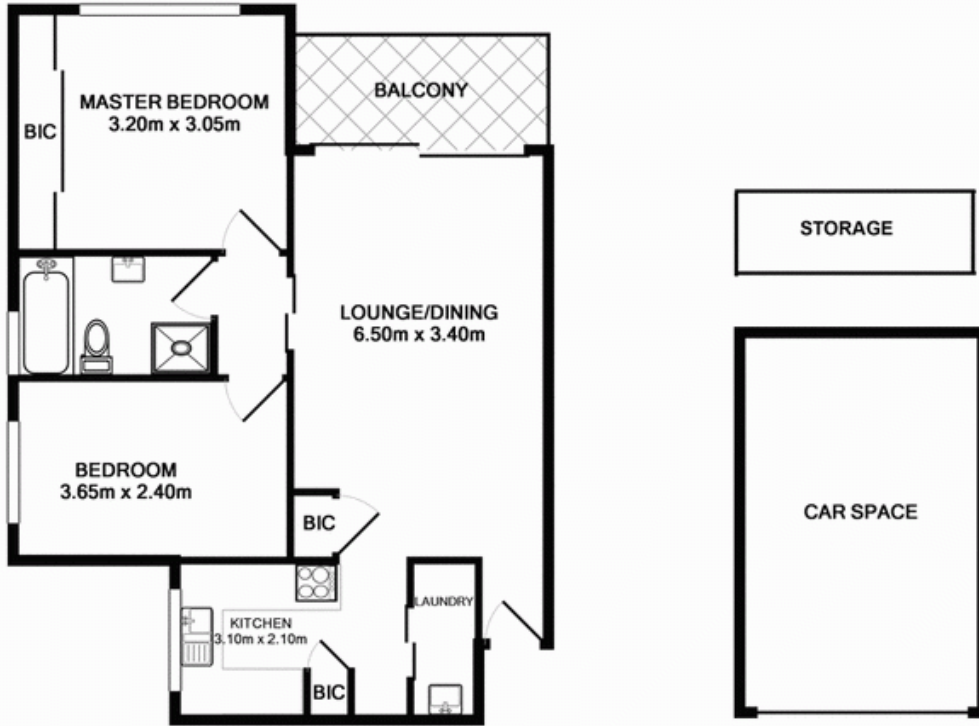
There is also a separate internal laundry, under building carport and separate storage cage.

Located in a quiet tree lined street minutes from the beach, shops, city transport, schools, parks & Dee Why's 'Strand' cafe & restaurant strip.

Price: Offers Over \$410,000

Stone Mona Vale

02 8030 8549



TOTAL APPROX. FLOOR AREA 70.2 SQ.M. (756 SQ.FT.)
Measurements are approximate. Not to Scale. For illustrative purposes only.

