



3/6 Ilikai Place DEE WHY, NSW



### Perfect Investment Unit!

This ground floor apartment is situated in a quiet cul-de-sac, only minutes from shops, schools, parks, transport, playing fields and just a short walk to Dee Why Beach & cafes.

The spacious lounge and dining area features new carpet and opens out to a sunny patio via glass sliding doors.

Other features include; large bedroom with lots of natural light, full bathroom with internal laundry, modern open plan kitchen, and a single carspace.

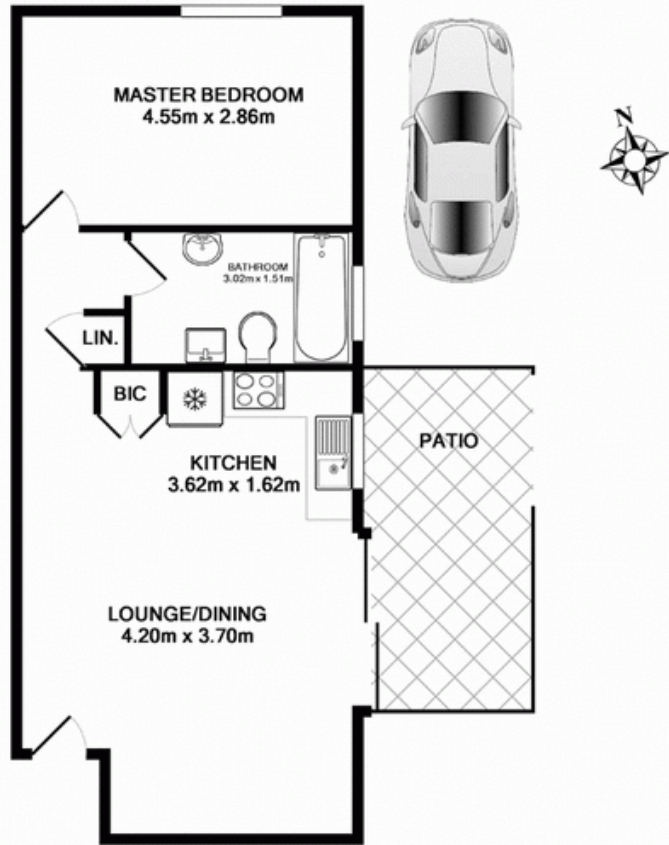
This is the perfect starting unit for investors and is located in a secure complex.

**Price:**

Offers Over \$275,000

**Stone Mona Vale**

02 8030 8549



3-6 Ilikai Place, Dee Why

TOTAL APPROX. FLOOR AREA 47.9 SQ.M. (515 SQ.FT.)  
Measurements are approximate. Not to Scale. For illustrative purposes only.