



8 Grasmere Crescent WHEELER HEIGHTS, NSW

3

1

1

### Home for all the family

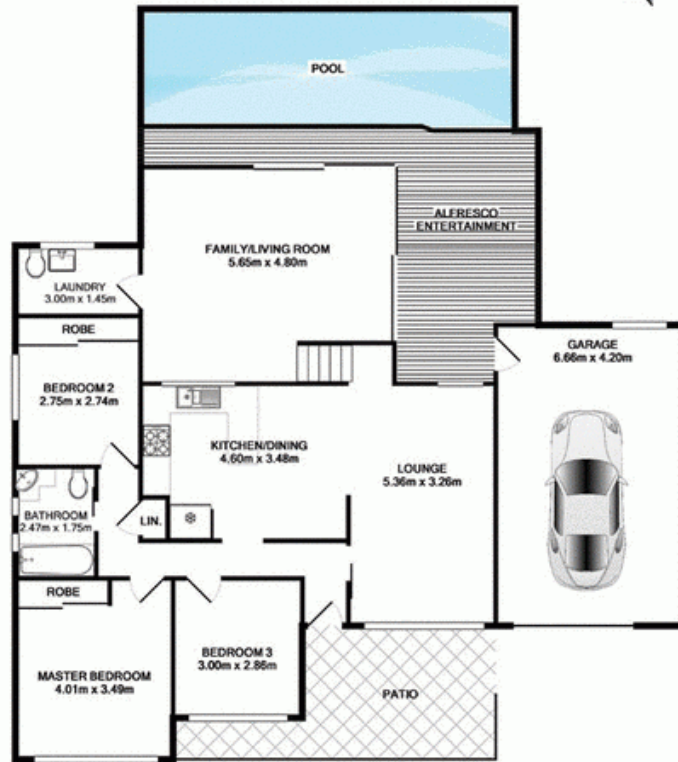
Beautifully presented, this low maintenance family home is filled with natural sun light for most of the day. Stylishly rendered and surrounded by easy care landscaped gardens for the busy family. Entertain or relax in the spacious living area adjoining the open plan kitchen and dining as the kids have all the space they need in the oversized family room. Or for those warmer days coming there is also a large Alfresco entertainment deck surrounding the solar heated inground pool, complete with automatic equipment and jets. All 3 bedrooms are of good size separated by an 'As New' modern family bathroom. Other attributes of this gorgeous home include: Western bush views over Garigal National Park, split system air conditioning, view of the pool from almost every living room and a single lock up garage. Located in a quiet friendly street close to city and Manly buses, shops and schools.

**Price:**

Offers Over \$820,000

**Stone Mona Vale**

02 8030 8549



## 8 Grasmere Crescent, Collaroy Plateau

TOTAL APPROX. FLOOR AREA 183.5 SQ.M. (1975 SQ.FT.)  
Measurements are approximates. Not to Scale. For illustrative purposes only.