

11 Cormack Road BEACON HILL, NSW



Home Sweet Home

Perfectly located in a quiet cul-de-sac yet minutes drive from a choice of great schools, Warringah Mall and playing fields is this fantastic family home. Positioned on a generous level block the home boasts a sunny northerly aspect and a large fully fenced rear yard. Step in through an inviting front patio to an expansive living area, also facing north. Adjoining the lounge is a separate formal dining room plus a large family/living area opening out to the rear yard.

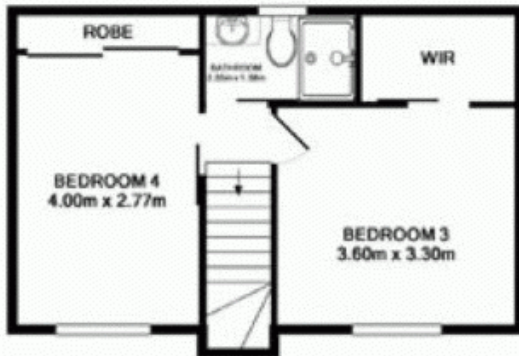
Price:

Offers Over \$850,000

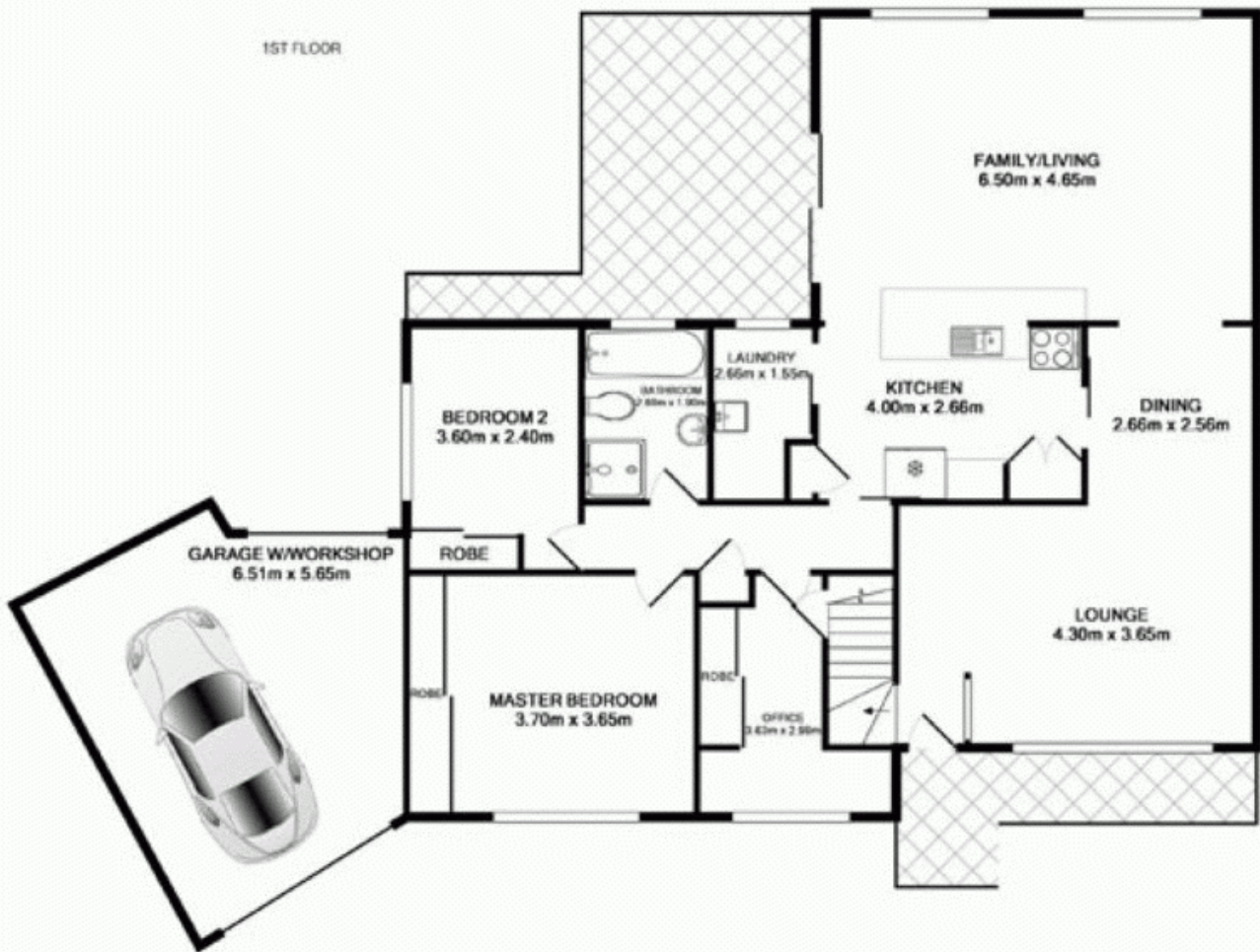
Stone Mona Vale

02 8030 8549

4 2 1



1ST FLOOR



GROUND FLOOR

11 Cormack Road, Beacon Hill

TOTAL APPROX. FLOOR AREA 177.8 SQ.M. (1914 SQ.FT.)
Measurements are approximate. Not to Scale. For illustrative purposes only.