

1/9 Lumeah Avenue ELANORA HEIGHTS, NSW 4 [bed icon] 2 [bath icon] 2 [car icon]

Sophisticated Family Residence

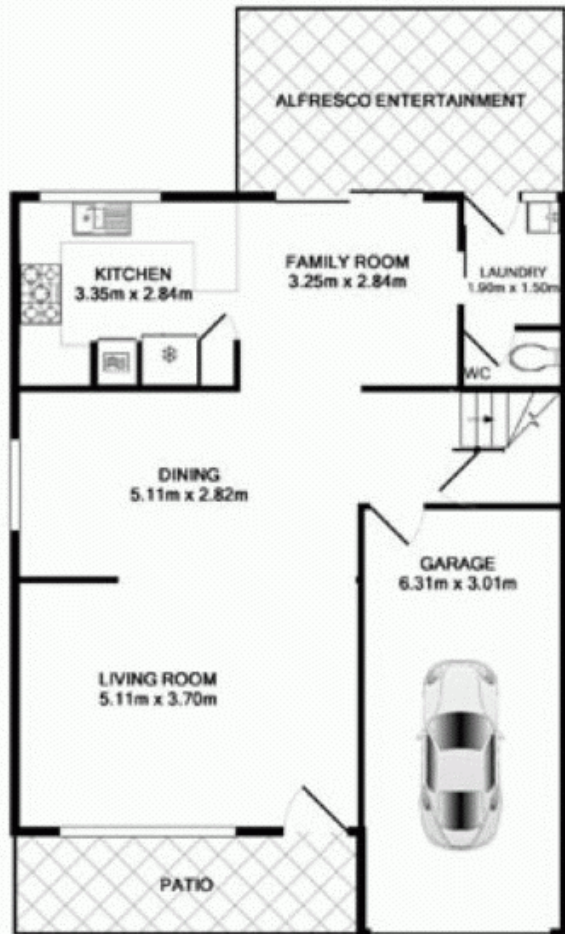
The upstairs accommodation consists of 4 generous bedrooms all with built-ins; the master suite includes an ensuite and private sun terrace. There is also a full family bathroom complete with corner bath and separate shower. Other attributes of this beautifully appointed home include: lock up garage, extra car space, sunny front patio and plenty of storage. Finding a comfortable family residence that is also the absolute pinnacle of design is rare, inspect today....

Price: Offers Over \$790,000



Greg Duce 0409 749 287

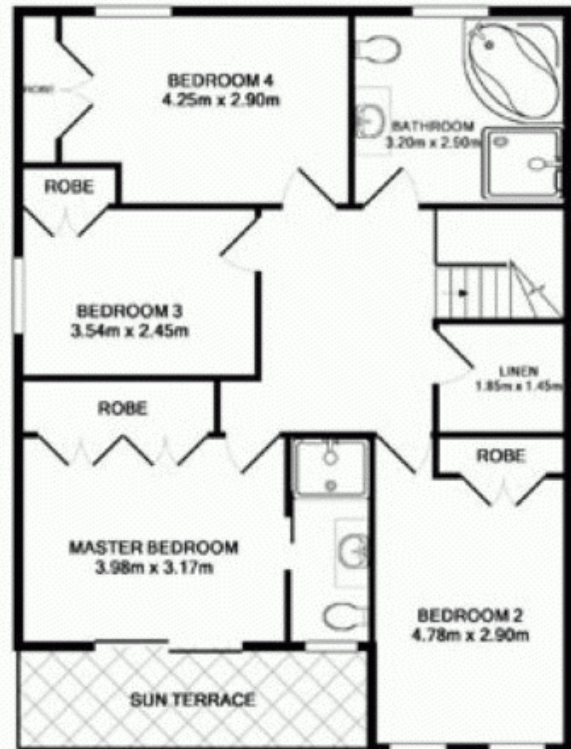
4 2 1



GROUND FLOOR



CARSPACE



1ST FLOOR

1/9 Lumeah Avenue, Elanora Heights

TOTAL APPROX. FLOOR AREA 181.3 SQ.M. (1736 SQ.FT.)
Measurements are approximate. Not to Scale. For illustrative purposes only.