

3 Eucalyptus Close WARRIEWOOD, NSW



Ultra Modern, Single Level Home

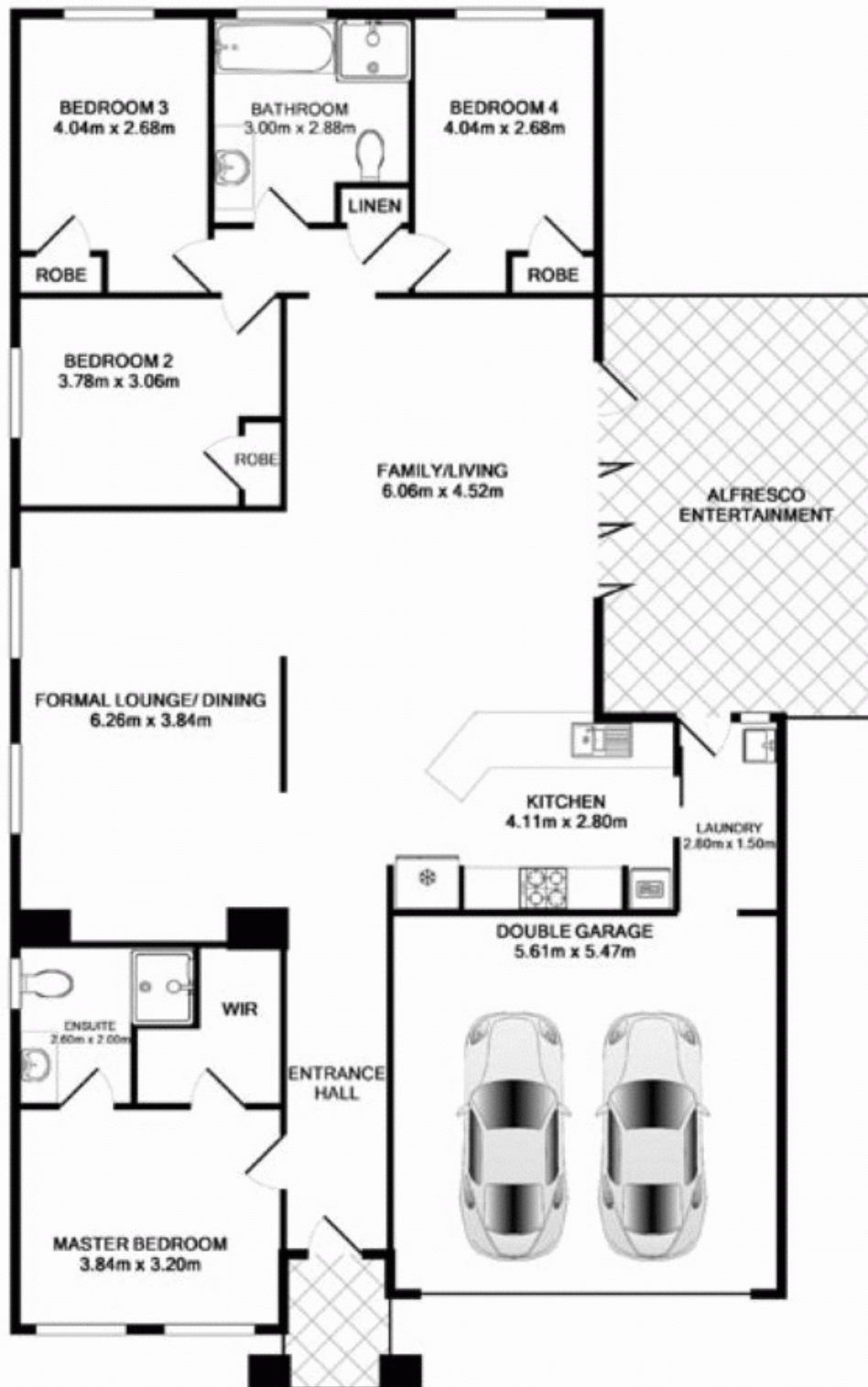
Located in a beautiful quiet, residential street, moments from a choice of great schools, shopping centre, transport and nature walks is this fantastic, near new single level, north east facing family home. Perfect for those wishing to downsize or for the young family, this ultra modern home is low maintenance and a level walk to all amenities.

Price:

Offers Over \$850,000

Stone Mona Vale

02 8030 8549



3 Eucalyptus Close, Warriewood

TOTAL APPROX. FLOOR AREA 175.6 SQ.M. (1891 SQ.FT.)
Measurements are approximate. Not to Scale. For illustrative purposes only.