

14/59 Howard Avenue DEE WHY, NSW



Contemporary Security Apartment

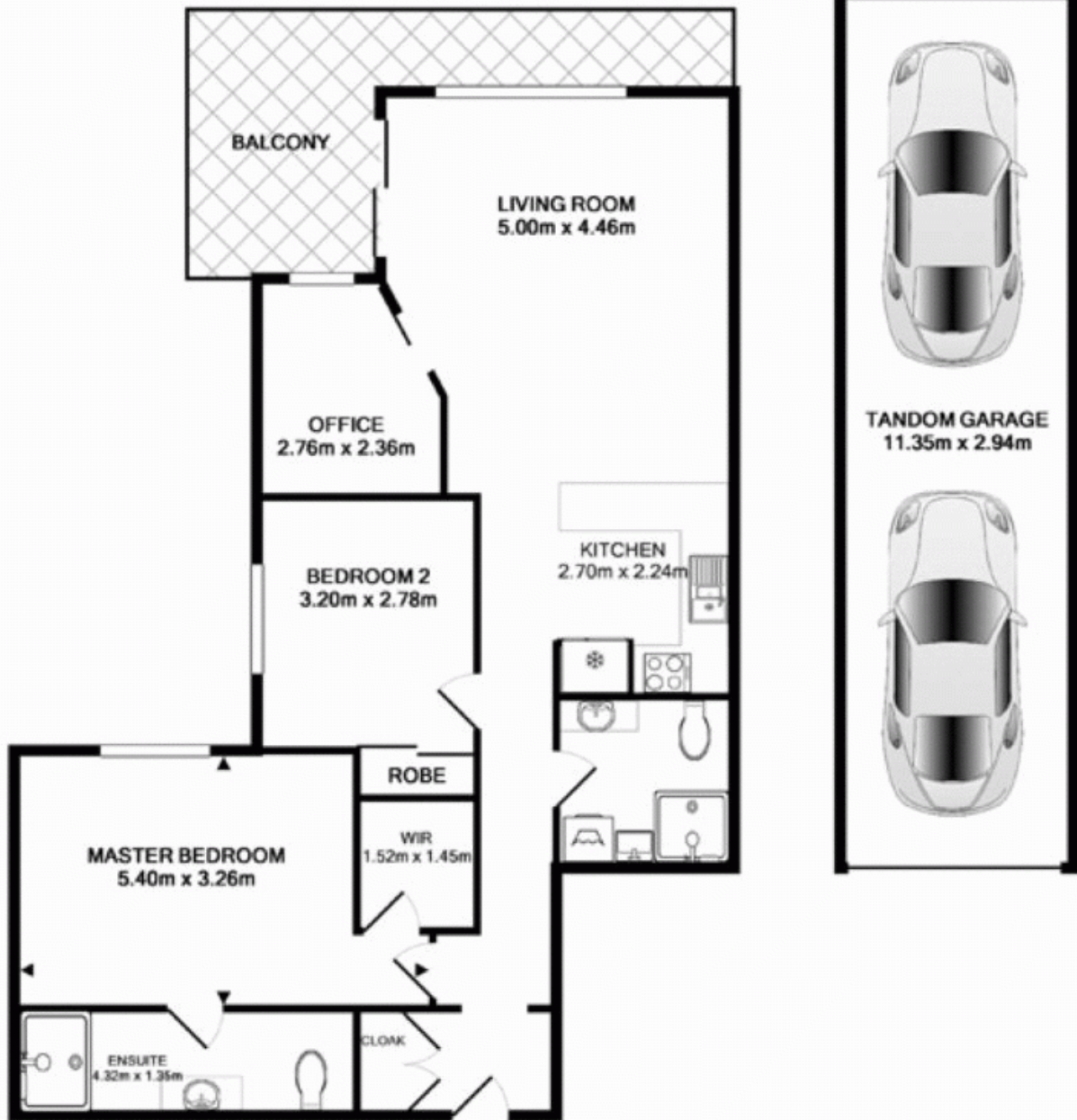
Looking for an apartment with that little extra? Then look no further. Located just up the road from the sparkling waters of Dee Why beach and some of Sydney's finest cafes & restaurants. Boasting an open spacious design, the sunny interiors spill onto an extensive north facing balcony, highlighted by stylish tiles, privacy shutters and a leafy outlook.

Price:

Offers Over \$570,000

Stone Mona Vale

02 8030 8549



14/59 Howard Avenue, Dee Why

TOTAL APPROX. FLOOR AREA 113.7 SQ.M. (1224 SQ.FT.)
Measurements are approximate. Not to Scale. For illustrative purposes only.