



39/26 MacPherson Street WARRIEWOOD, NSW

3 

2 

2 

Beautifully Renovated Townhome

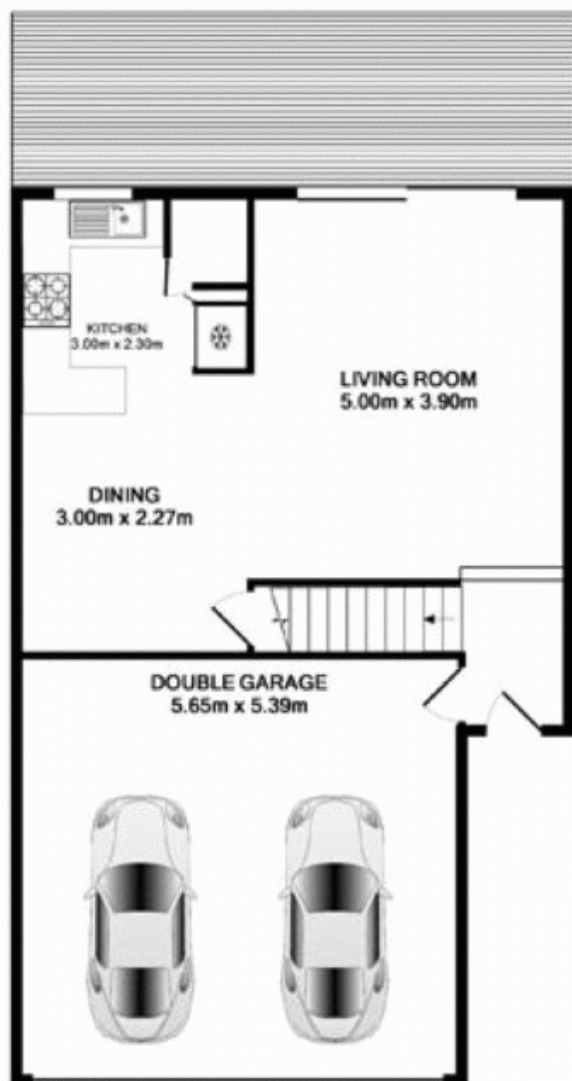
Set in the sought after 'Glen Eagles' complex, minutes from shopping centres, schools, parks and transport is this stunning, N/E facing town home. Inside boasts a generous living & dining, highlighted by stylish floating timber floors opening out to a gorgeous courtyard complete with undercover timber entertaining deck, generous grassed area and modern feature garden with fish pond. The 'As New' kitchen boasts S/S appliances and pantry.

Price:

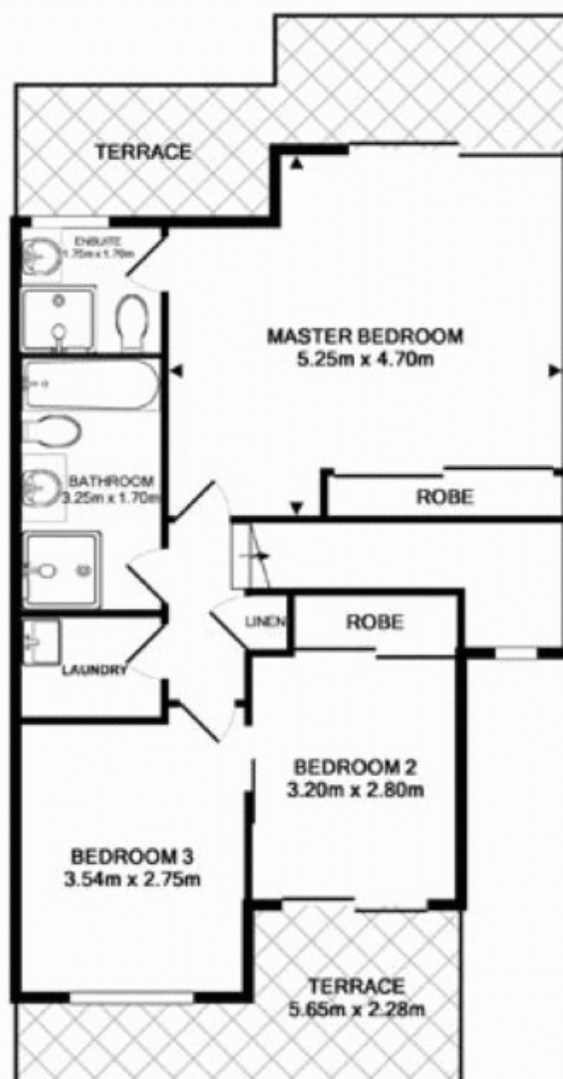
Offers Over \$645,000

Stone Mona Vale

02 8030 8549



GROUND FLOOR



1ST FLOOR

39/26 Macpherson Street, Warriewood

TOTAL APPROX. FLOOR AREA 136.3 SQ.M. (1467 SQ.FT.)
Measurements are approximate. Not to Scale. For illustrative purposes only.