

1 Waterside Grove WARRIEWOOD, NSW 4 [bed icon] 3 [bath icon] 2 [car icon]

Premier Family Residence

This master built family retreat is also the perfect outdoor entertainer with an abundance of separate living areas, leaving plenty of room for each member of the family to have their own private space, and stylish all year round outdoor entertaining with undercover dining and even a Jacuzzi. Beautifully presented from the inside out including new plantation shutters, and perfectly manicured gardens. Located in a beautiful, quiet, residential street, moments from a choice of great schools, shopping centre, transport, nature walks and the beaches are just a few minutes' drive away this premier residence is a family haven in a sought after location.

Attributes include:

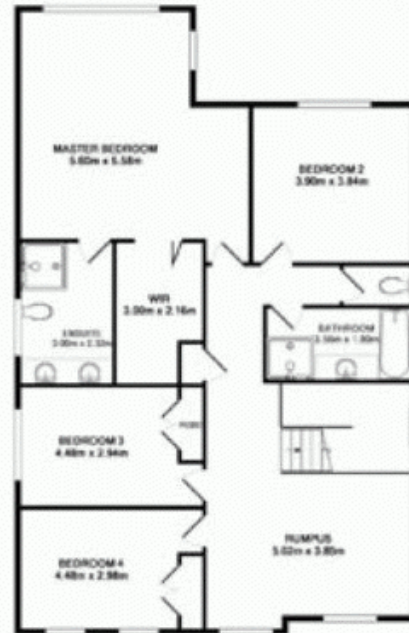
- * Formal lounge & dining, rumpus, casual dining & lounge, study & upstairs living area
* 4 large bedrms with built-ins including a king sized master suite with WIR & ensuite
* Ducted reverse cycle A/C, drive through DLUG with internal access, north aspect

Price: Offers Over \$1,050,000

Stone Mona Vale

02 8030 8549

4 3 2



SCALE (METRES)

PLANS SHOWN ONLY INDICATIVE OF LAYOUT. DIMENSIONS ARE APPROXIMATE.

1 Waterside Grove, Warriewood

TOTAL APPROX. FLOOR AREA: 280.7 SQM (3027 SQ FT)
Measurements are approximate. They do not include the boundary dimensions.