

59/28 MacPherson Street WARRIEWOOD, NSW



### Stunning Townhome with Bushland Views

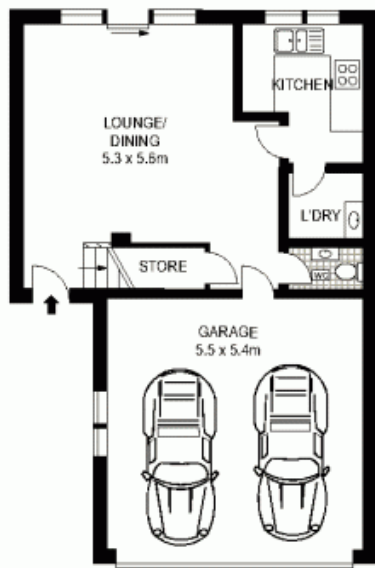
This immaculately renovated townhome feels more like a private family home with its perfect northerly aspect and coveted position within 'Blair Athol' adjoining and overlooking Fern Creek reserve and parklands. With its flexible floorplan and low maintenance courtyard/garden this home is also perfect for the young busy family or those wishing to downsize without losing out on space and outdoor living.

**Price:**

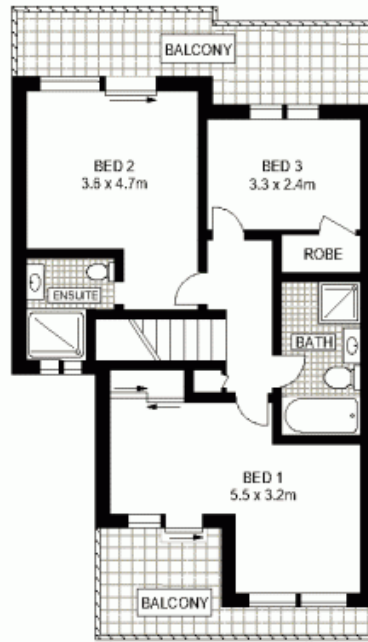
Offers Over \$660,000

**Stone Mona Vale**

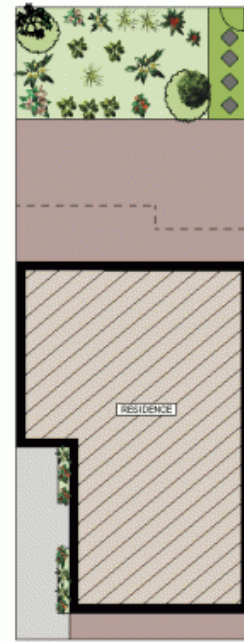
02 8030 8549



GROUND FLOOR



TOP FLOOR



SITE PLAN (NOT TO SCALE)



PLANS SHOWN ONLY INDICATIVE OF LAYOUT. DIMENSIONS ARE APPROXIMATE.

INT : 134m<sup>2</sup>



59/28 MACPHERSON STREET

WARRIEWOOD