

76 Warriewood Road WARRIEWOOD, NSW

3 

2 

2 

Stylish, Single Level Family Home

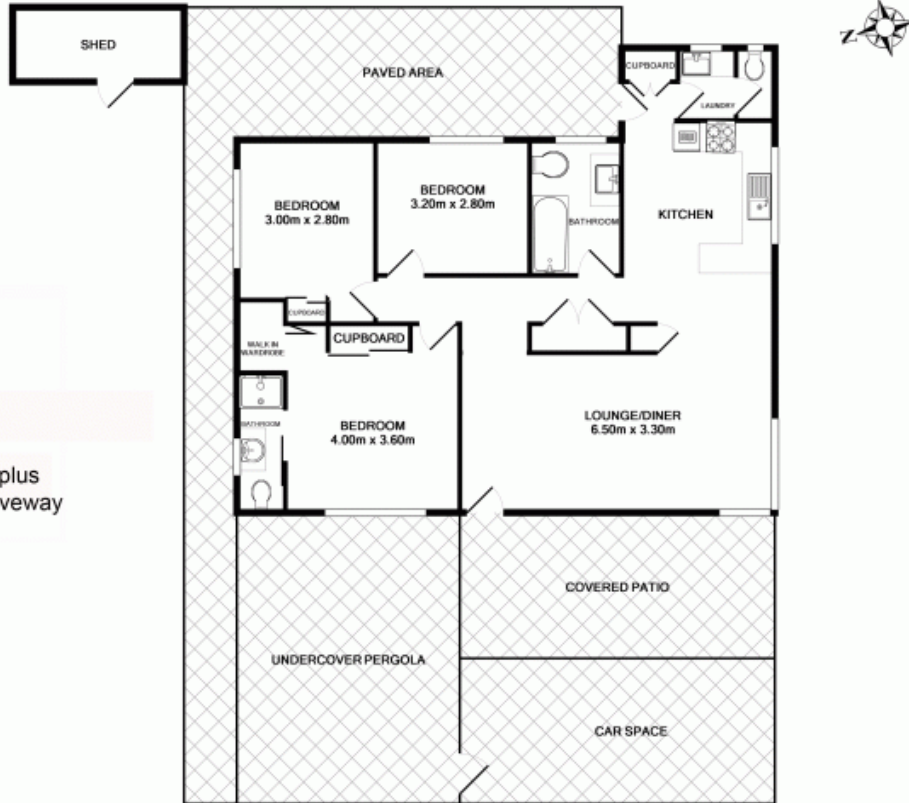
Ideally located only a short walk to Warriewood shopping centre, local schools, children's playground and transport, this property offers the perfect setting for effortless modern living. Situated on a near 700sqm block with natural light from all 4 aspects, with private low maintenance gardens and a single level open plan design.

Price:

Offers Over \$780,000

Stone Mona Vale

02 8030 8549



2



3



Car space plus off Street Driveway

76 Warriewood Road, Warriewood

Measurements are approximate. Not to scale. Illustrative purposes only. Open2View does not take any responsibility for any information supplied.

Total Approx Floor Area 96.9 sq m