



25 Carolyn Avenue BEACON HILL, NSW

5 

5 

2 

Sophistication

Situated in one of the Northern Beaches most premier locations is this stunning architecturally designed residence. With emphasis on expansive open plan living, this immaculate home has all the modern conveniences and room for every member of the family their own personal space.

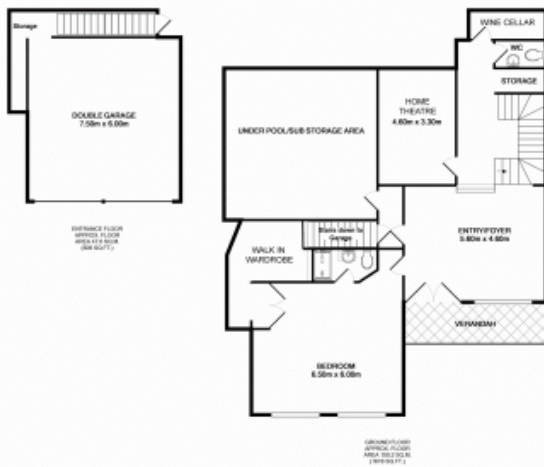
Price:

Offers Over \$1,430,000






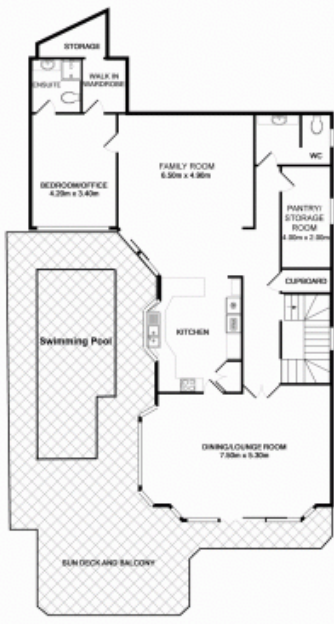
Greg Duce

0409 749 287



5TH FLOOR APPROX FLOOR AREA 112.00 SQ M (SEE S&P/1)

-  5
-  6
-  2



1ST FLOOR APPROX FLOOR AREA 212.00 SQ M (SEE S&P/1)



2ND FLOOR APPROX FLOOR AREA 129.10 SQ M (SEE S&P/1)



25 Carolyn Ave, Beacon Hill

Measurements are approximate. Not to scale. Illustrative purposes only. OpenView does not take any responsibility for any information supplied.

Total Approx Floor Area 553.1 sq m