



3/69 Lynwood Avenue DEE WHY, NSW

3

2

1

Modern, North Facing Townhome

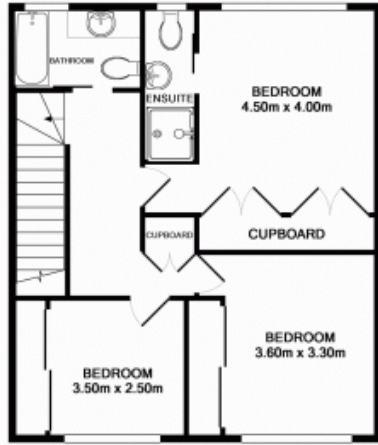
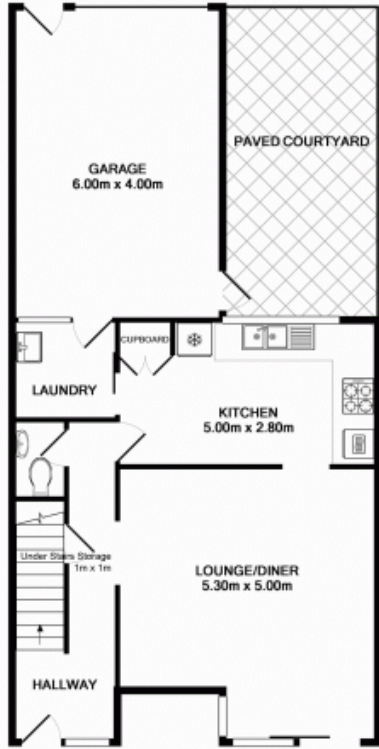
Facing due north with floor to ceiling windows, this sunny town home appeals to all walks of life, from the growing family, executive couple to people wishing to downsize to a modern low maintenance home with still room for entertaining and guests. Conveniently located within minutes of shops, schools, parks, playing fields, transport and the beach.

Price:

Offers Over \$620,000

Stone Mona Vale

02 8030 8549



- 2
- 3
- 1

Number 3, 69 Lynwood Ave, Dee Why Measurements are approximate. Not to scale. Illustrative purposes only. Open2Home does not take any responsibility for any information supplied. Total Approx Floor Area 137.6 sq m