

7/25 Angophora Circuit WARRIEWOOD, NSW



Style & Stature

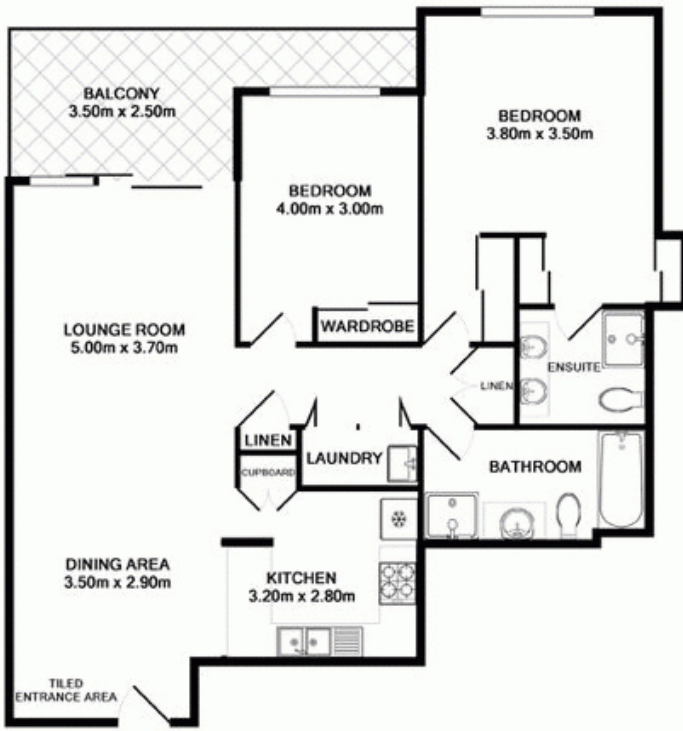
Finished to the highest standard less than 2 years ago with over 5 years of home warranty still in place is this premier apartment. Located in a security, resort style complex surrounded by landscaped gardens and right opposite a large park land.




Price:

Offers Over \$595,000

Stone Mona Vale

02 8030 8549



-  2
-  2
-  2



Unit 7 25 Angophora Circuit Warriewood Measurements are approximate. Not to scale. Illustrative purposes only. Open2Home does not take any responsibility for any information supplied. Total Approx Floor Area 122.4 sq.m