

STONE



14/44 Crown Road QUEENSCLIFF, NSW

2 

1 

1 

### Entertainer's Dream

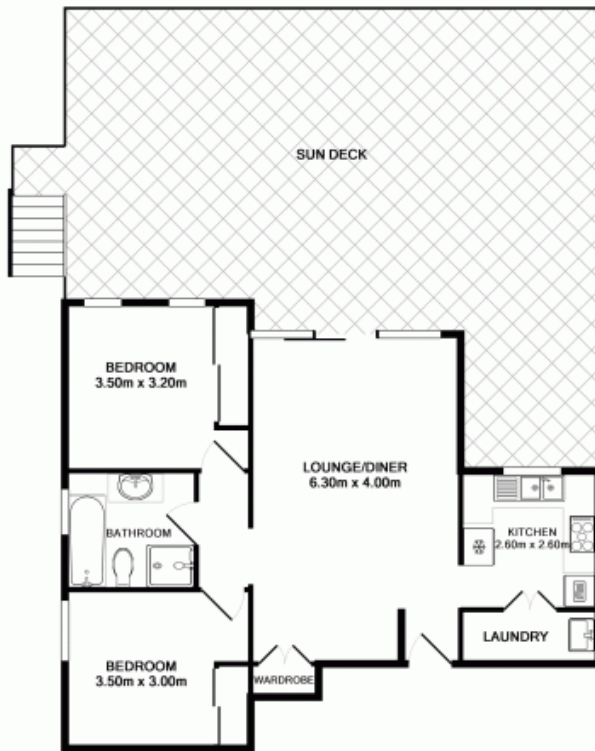
Located in one of the Northern beaches most sought after areas, approximately 400m from the famous Manly beach is this fantastic two bedroom apartment. Highlighted by a rare 65sqm tiled deck with views over the surrounding district, this property is perfect for the avid entertainer.




Price: \$590,000



**Greg Duce**

0409 749 287



-  1
-  2
-  1

Unit 14, 44 Crown Road Queenscliff

Measurements are approximate. Not to scale. Illustration purposes only. Open2View does not take any responsibility for any information supplied.

Total Approx Floor Area 80.3 sq.m