

28 Trentbridge Road BELROSE, NSW

4 3 2

### Immaculate Home for the Growing Family

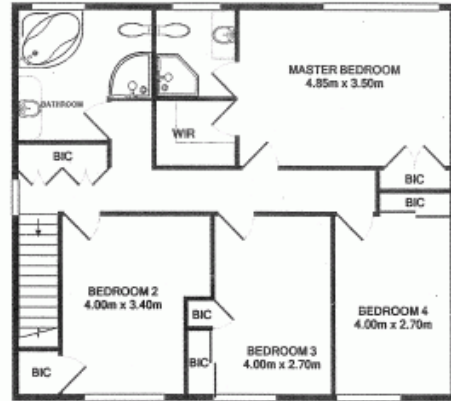
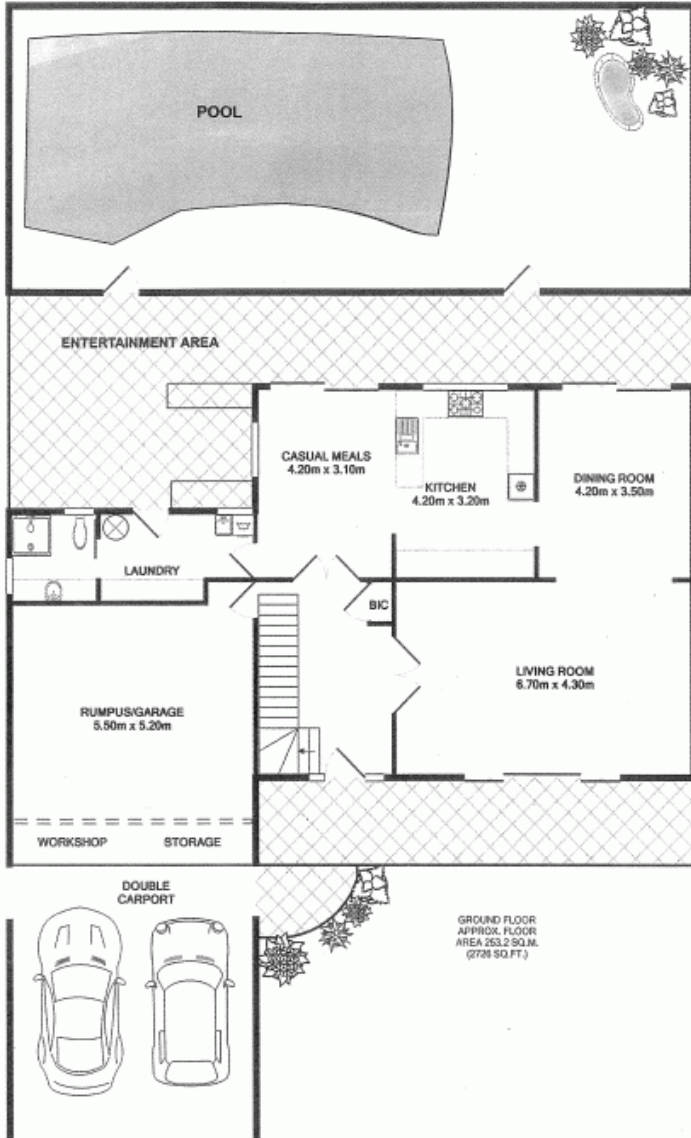
Immaculate two storey family home, located in a quiet tree lined street minutes walk from local shopping centres, a choice of schools, child care, play fields and transport to the city. Expansive front & rear yards plus a solar heated inground pool leaves plenty of space for the growing family to enjoy the outdoors without leaving home.

Price: Offers Over \$890,000

Stone Mona Vale

02 8030 8549

# 28 TRENTBRIDGE ROAD, BELROSE



**1ST FLOOR**  
APPROX. FLOOR AREA 83.3 SQ.M. (897 SQ.FT.)

TOTAL APPROX. FLOOR AREA 336.5 SQ.M. (3623 SQ.FT.)  
Measurements are approximate. Not to Scale. For illustrative purposes only.