



14/2 Forest Road WARRIEWOOD, NSW

3 

2 

2 

North Facing Town Home - Pet Friendly

Peacefully positioned in the whisper quiet 'Ivanhoe' complex drenched in an abundance of natural light courtesy of its northerly aspect and skylights, this generous town home is perfect for those looking to downsize or raise a young family without compromising on space and style. The complex offers a host of features including visitor parking, a heated pool, spa and sauna room plus a grassed seating area and playground for children.

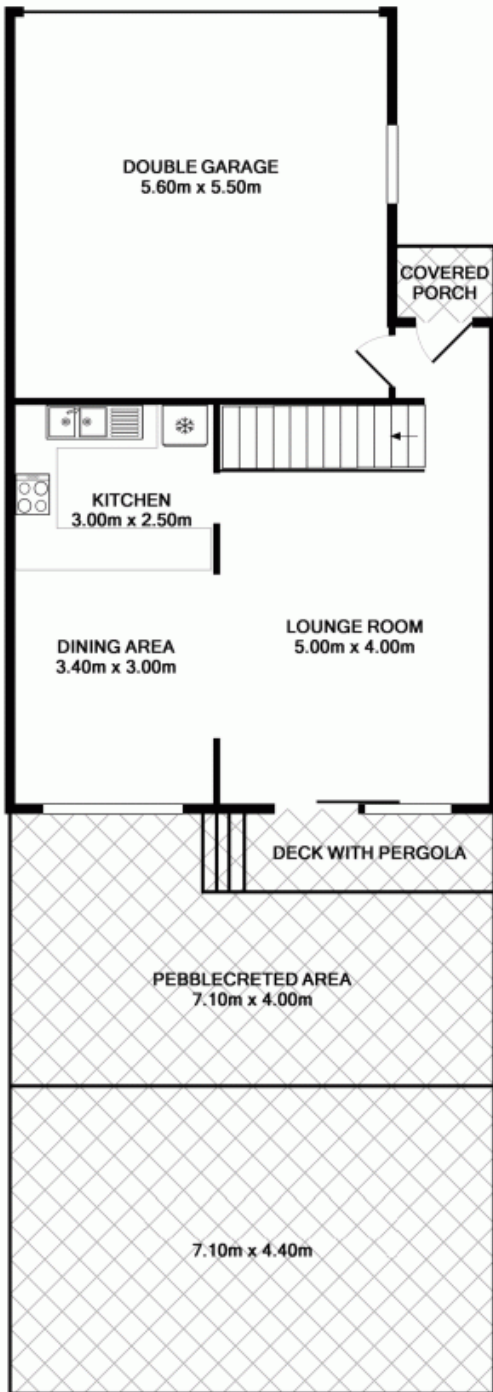
Price:

Offers Over \$625,000

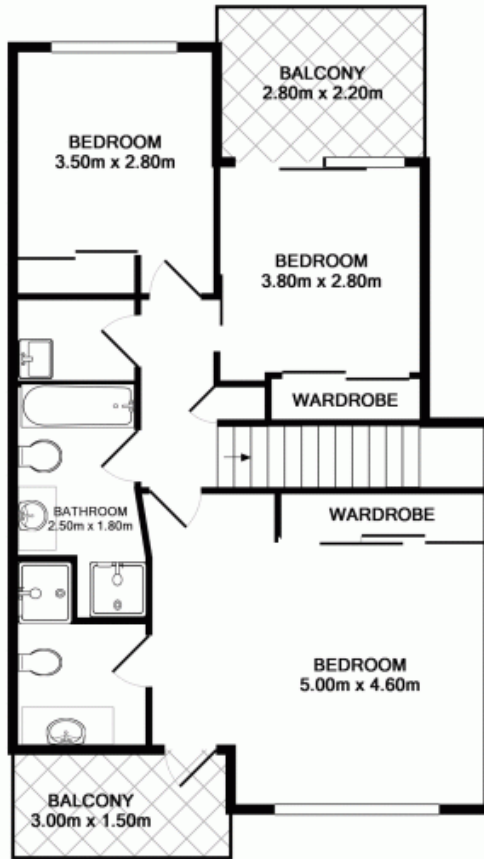


Greg Duce

0409 749 287



GROUND FLOOR



1ST FLOOR



2



3



2

Number 14, 2 Forest Road, Warriewood

Measurements are approximate. Not to scale. Illustrative purposes only.
OpenView does not take any responsibility for any information supplied.