



4/13 Graylind Close COLLAROY, NSW

2 

2 

1 

Million Dollar Views

Enjoying spectacular panoramas from Gosford to Long Reef and beyond, this beautifully appointed top floor apartment showcases amazing views from the exclusive sun terrace and almost every room. Boasting a two storey townhouse style floor-plan covering a large 177sqm, it is exceptionally quiet and private and is a short walk to the golden sands of Collaroy Beach.

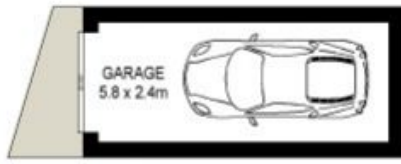
Price:

Offers Over \$785,000

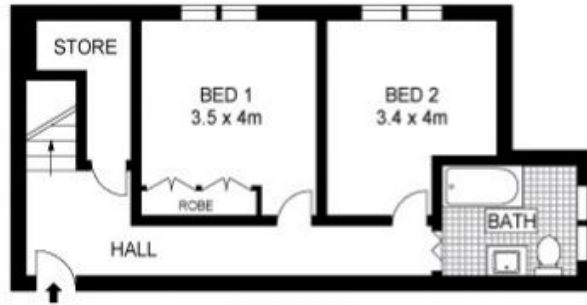


Trent McKay

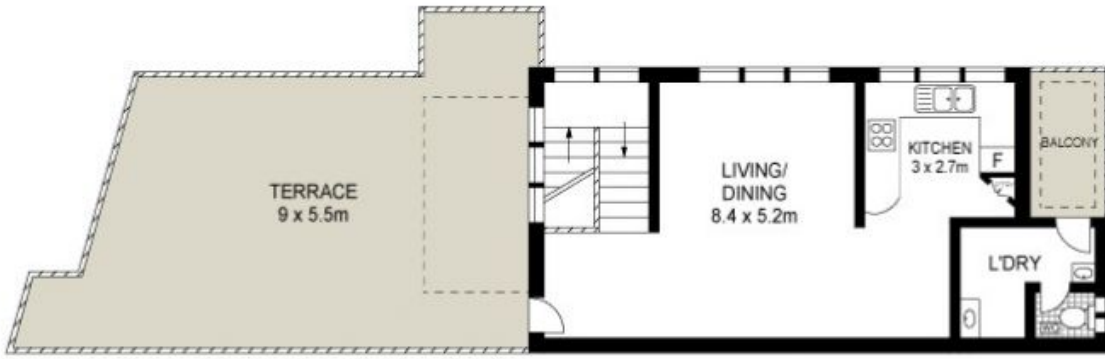
0419 288 867



GROUND FLOOR



LOWER LEVEL



TOP LEVEL



Scale in metres. Indicative only. Dimensions are approximate. All information contained herein is gathered from sources we believe to be reliable. However we cannot guarantee its accuracy and interested persons should rely on their own enquiries.



4/13 Graylind Close, Collaroy