



11/19a Addison Road Manly, NSW

3

2

2

Absolute Harbourfront Luxury Town Home

Immersed in a sublime absolute harbourfront setting with access to your own private sandy beach, this spectacular town home offers a lifestyle without parallel. Sleek and stylish executive home throughout, it embraces intimate and inspiring harbour scenes also soaked in natural sunlight all day. Nestled in a highly desirable enclave of Manly's Eastern Hill, designed to enjoy panoramas from multiple levels and most rooms in the home, there is effortless flow from inside living to the entertaining decks, perched just metres above the harbour foreshore

Price: \$1800 per week

Bond: \$7,200

Available Date: 14/03/2018



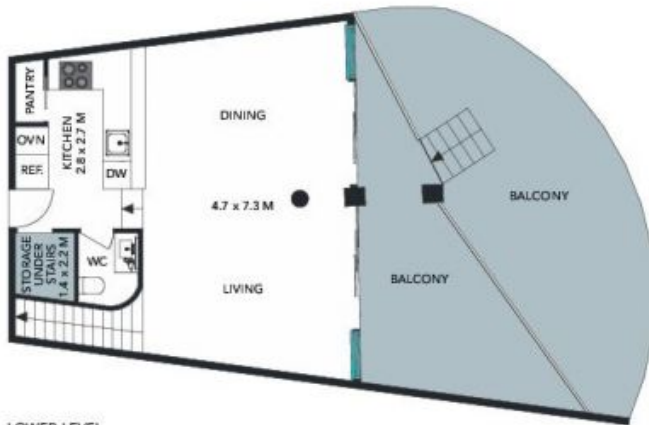
John Hall



GROUND LEVEL



UPPER LEVEL



LOWER LEVEL



(NOT IN POSITION)





The floor plan is not to scale; measurements are indicative and in metres. All features included in this 3D plan are for inspiration purposes only. This is not an exact replica of the property or the position of exterior elements. Plans should not be relied on. Interested parties should make and rely on their own enquiries.

11/19a Addison Road, Manly
 stonerealestate.com.au

Produced by DIAKRIT