



10 Kara Street LANE COVE, NSW

3 

2 

3 

SOLD PRIOR - CARLO PALAMARA 0411 644 216

FEDERATION STYLE

Enjoy this delightful, high quality home on an easy care low maintenance block situated within close proximity to Lane Cove plaza, schools and new city express bus interchange.

Features include:

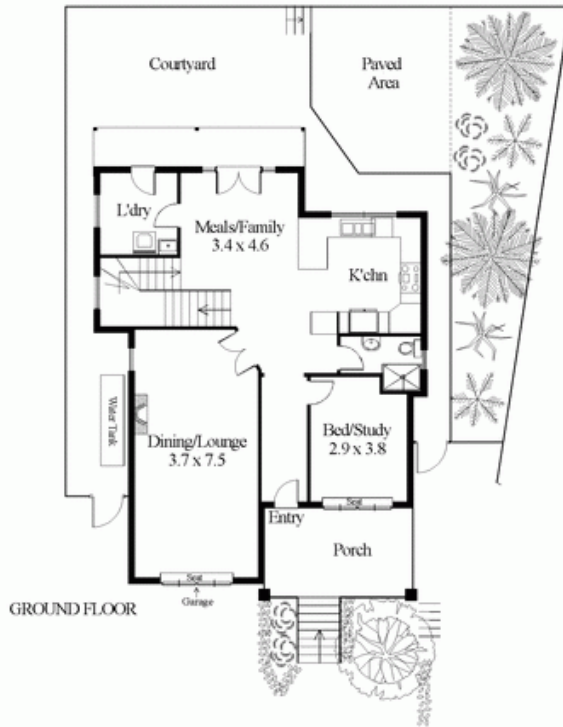
Stone Lane Cove

(02) 9427 7466

DISCLAIMER: - Marie D'Alvares
 Trading as NORTHSIDE FLOORPLANS - Lane Cove
 Tel: 9144 3999, Mob: 0404 893 908
 This floor plan serves only as a guide for promotional purposes and
 should not be relied upon for any specific detail. No liability will be accepted.



INTERNAL FLOOR AREA (approx): 176m²



10 Kara Street, Lane Cove