

2/512-514 Mowbray Road LANE COVE, NSW

2 2 1

SOLD - SORAY WHEATLEY 0412 532 089

Price: Over \$460,000

Secure this surprisingly quiet and alluring apartment providing an intimate sense of privacy.

Offering over 100sqm on title, this generously proportioned apartment showcases a chic contemporary fusion of stylish interiors and light filled areas.

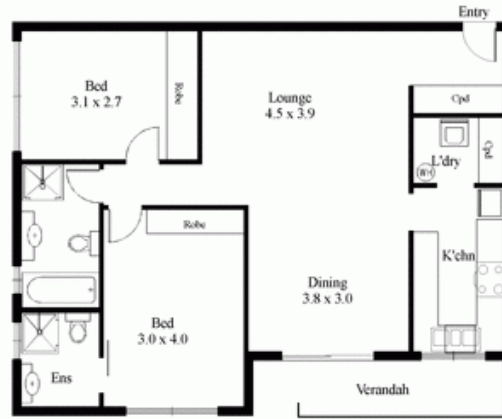
Occupying an ideal and popular corner position of this well maintained and low rise block, this viable investment will appeal to the most discerning purchaser.

Stone Lane Cove

(02) 9427 7466

DISCLAIMER - Mairi D'Abramo
Trading as NORTHERN FLOORPLANS - Lane Cove
Tel: 91 14 3999, Mob: 0481 895 908
This floor plan serves only as a guide for general purposes and
should not be relied upon for any specific detail. No liability will be accepted.

Garage
6.6 x 2.4



Unit 2 / 512-514 Mowbray Road, Lane Cove