

16/40 Epping Road LANE COVE, NSW

2 

1 

SOLD BY CHRIS BALFOUR 0400 041 200 & CANDACE PARKS 0418 282 028

Price:

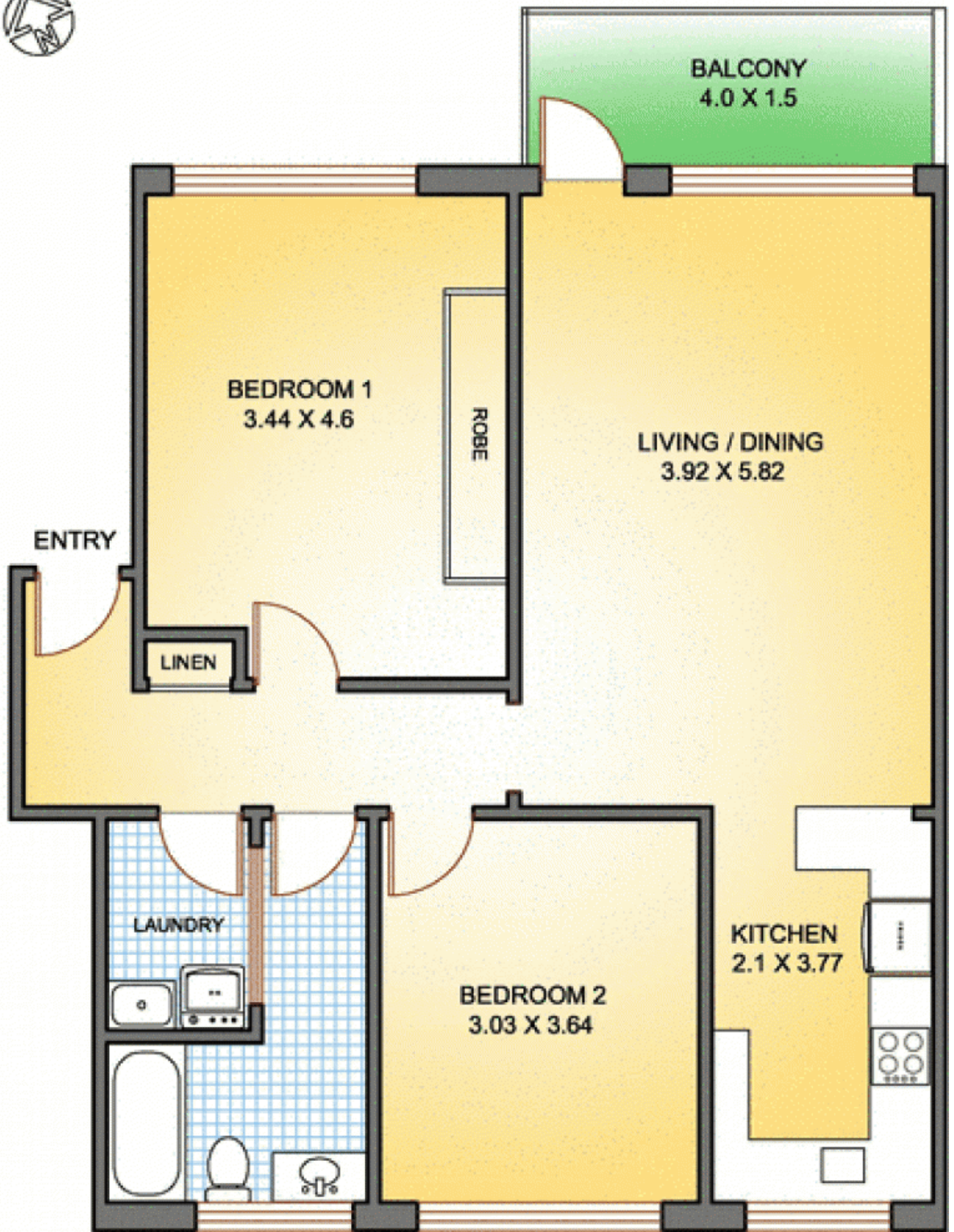
CONTACT AGENT

Set back from the street and tucked amongst the trees, this renovated top floor 87.3sqm unit offers quick and easy access to Epping Road in a surprisingly quiet and protected environment. With a leafy outlook from all windows, features include:

- Large combined lounge/dining area to north-facing balcony
- New kitchen with stainless steel appliances and caesarstone bench tops
- Updated bathroom
- Internal laundry room
- Timber floors throughout
- Entrance foyer with linen cupboard
- Undercover parking
- Lock up storage room

Stone Lane Cove

(02) 9427 7466



COVERED CAR SPACE
6.0 X 3.43

