



7/16 Epping Road LANE COVE, NSW

2 1 1

SOLD BY CANDACE PARKS 0418 282 028

Price:

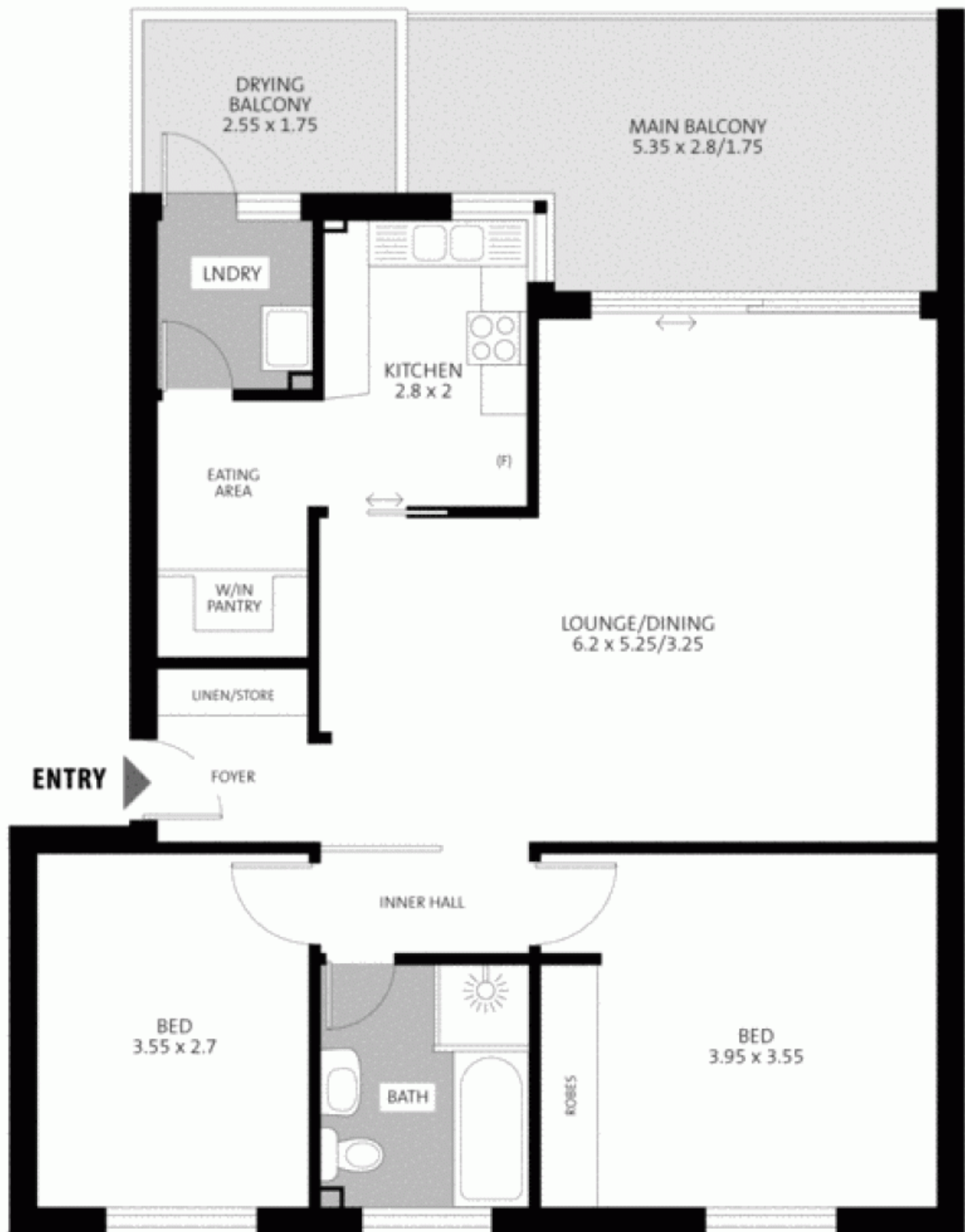
CONTACT AGENT

If you enjoy dining alfresco with room to move, you will fall in love with the potential of this 103sqm unit with massive L-shaped lounge/dining area flowing to a private 13sqm balcony perfectly proportioned for entertaining. Other features include:

Stone Lane Cove

(02) 9427 7466

Lane Cove • 7/16 Epping Road



NOT SHOWN: L/UP GARAGE (7.2 x 2.6)