

4/266 Pacific Highway LANE COVE, NSW

2

1

SOLD - CANDACE PARKS 0418 282 028 JULIA SIKORA 0410 451 749

Price:

SOLD

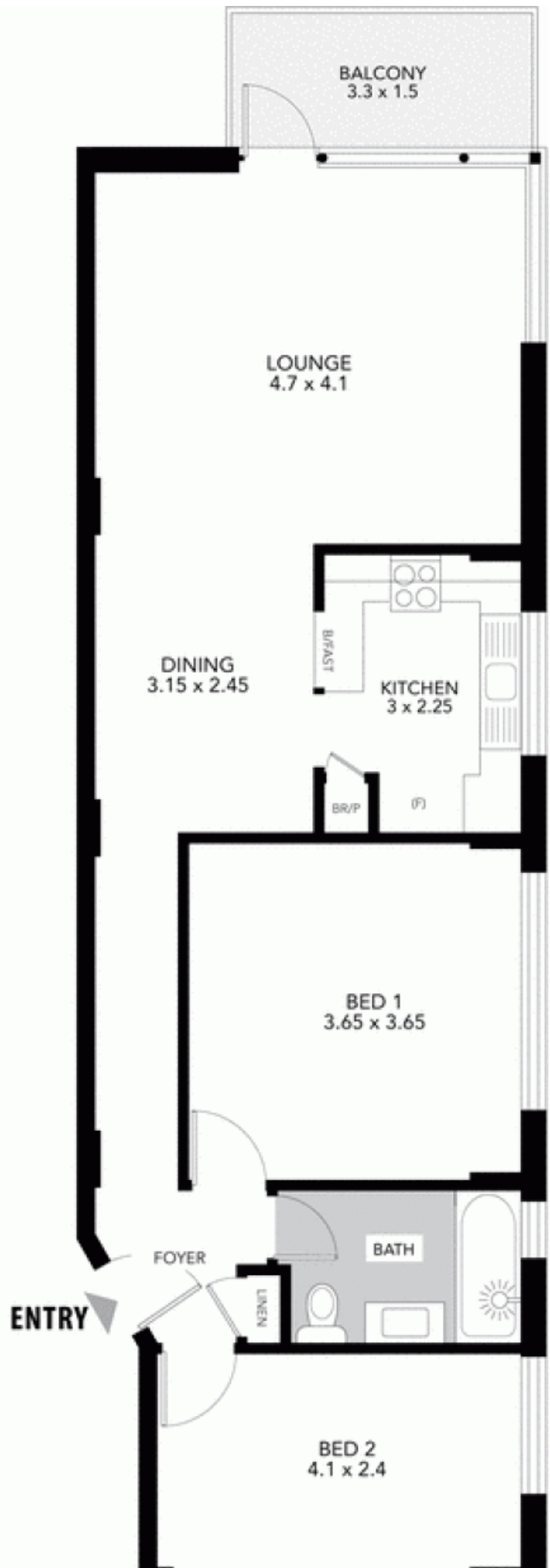
With one unit already sold, this is your last chance to secure a level entry unit quietly positioned at the back of this block with a peaceful bush outlook. Offering a tranquil lifestyle seldom found so close to amenities, features include:

Stone Lane Cove

(02) 9427 7466

Greenwich

4/266 Pacific Highway



NOT SHOWN:
U/COVER CAR SPACE



APPROXIMATE SCALE GUIDE (METRES)



PLEASE NOTE: All dimensions are approximate. This floor plan is provided to show the layout for marketing purposes only, and must not be relied upon for any other purpose. No liability will be accepted.