



27 Howell Avenue LANE COVE, NSW

4

3

2

SOLD BY JOCELYN GREGORY AND REBECCA MITCHELL

Price:

SOLD

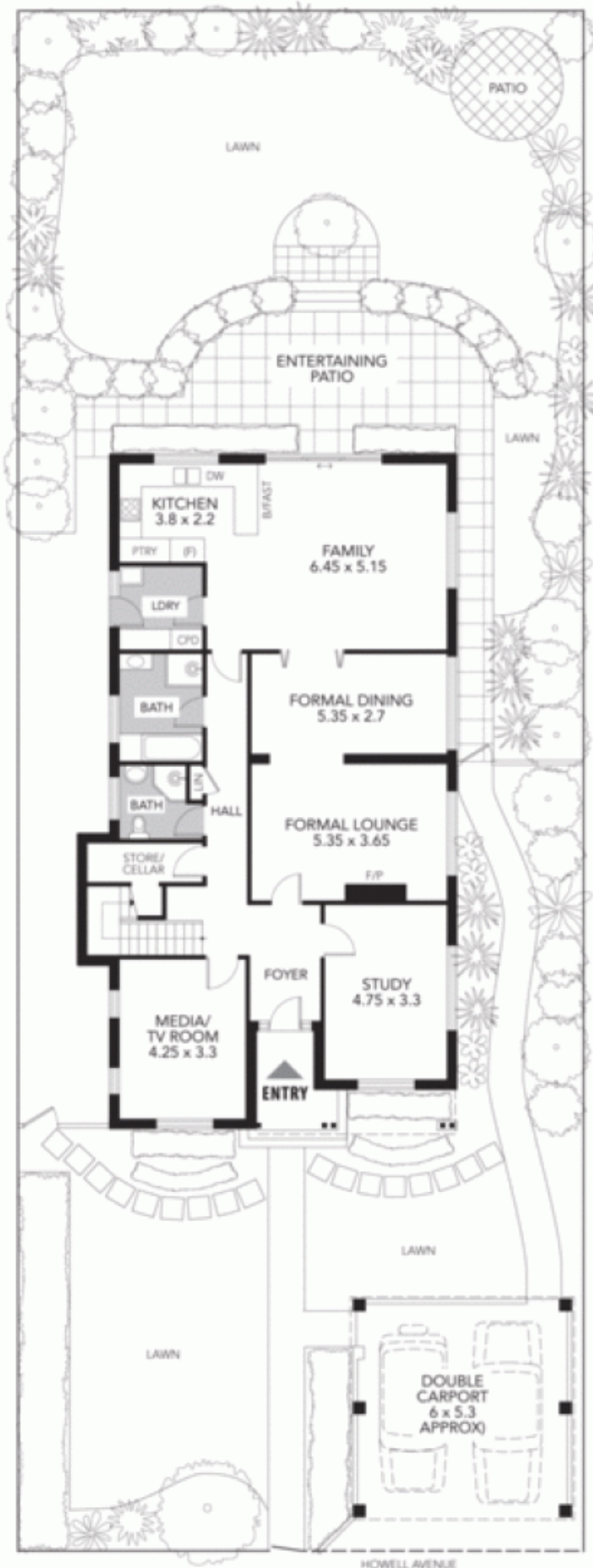
Set over two spacious levels and graced with a coveted north to rear aspect, this versatile family residence features a flowing selection of living spaces extending to child-friendly gardens. Elegantly appointed and enhanced by modern updates, its quiet cul-de-sac location is moments to city buses, schools and shops.

Stone Lane Cove

(02) 9427 7466

Lane Cove

27 Howell Avenue



GROUND FLOOR



APPROXIMATE SCALE GUIDE (METRES)



PLEASE NOTE: All dimensions are approximate, and any boundaries shown are approximate indications only. This floor plan is provided to show the layout for marketing purposes only, and must not be relied upon for any other purpose. No liability will be accepted.