



13 Myee Crescent LANE COVE, NSW

3

1

1

**SOLD AT AUCTION BY JOCELYN GREGORY 0418 230 309**

Price:

SOLD

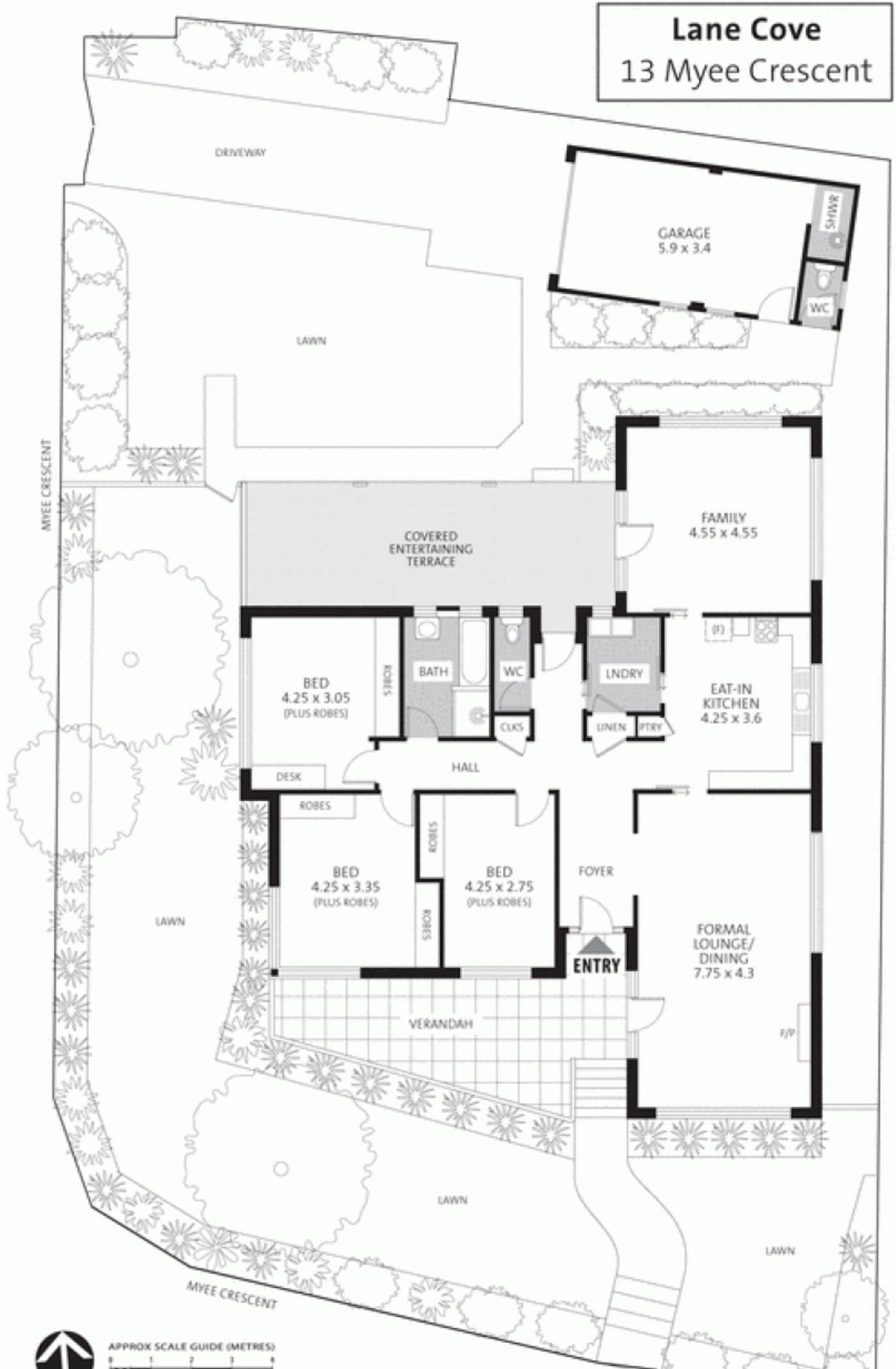
Endless possibilities abound with this well maintained 1959 double brick single level family home offered for the very first time. Set on a sunlit 613m2 north to rear site, it enjoys a wonderfully quiet and leafy location opposite prestige waterfront homes only metres from Blackman Park and the Lane Cove River.

**Stone Lane Cove**

(02) 9427 7466

# Lane Cove

13 Myee Crescent



APPROX SCALE GUIDE (METRES)

