

23/3B Bortfield Drive CHISWICK, NSW

2

1

1

SOLD BY REBECCA MITCHELL 0412 257 625

Price:

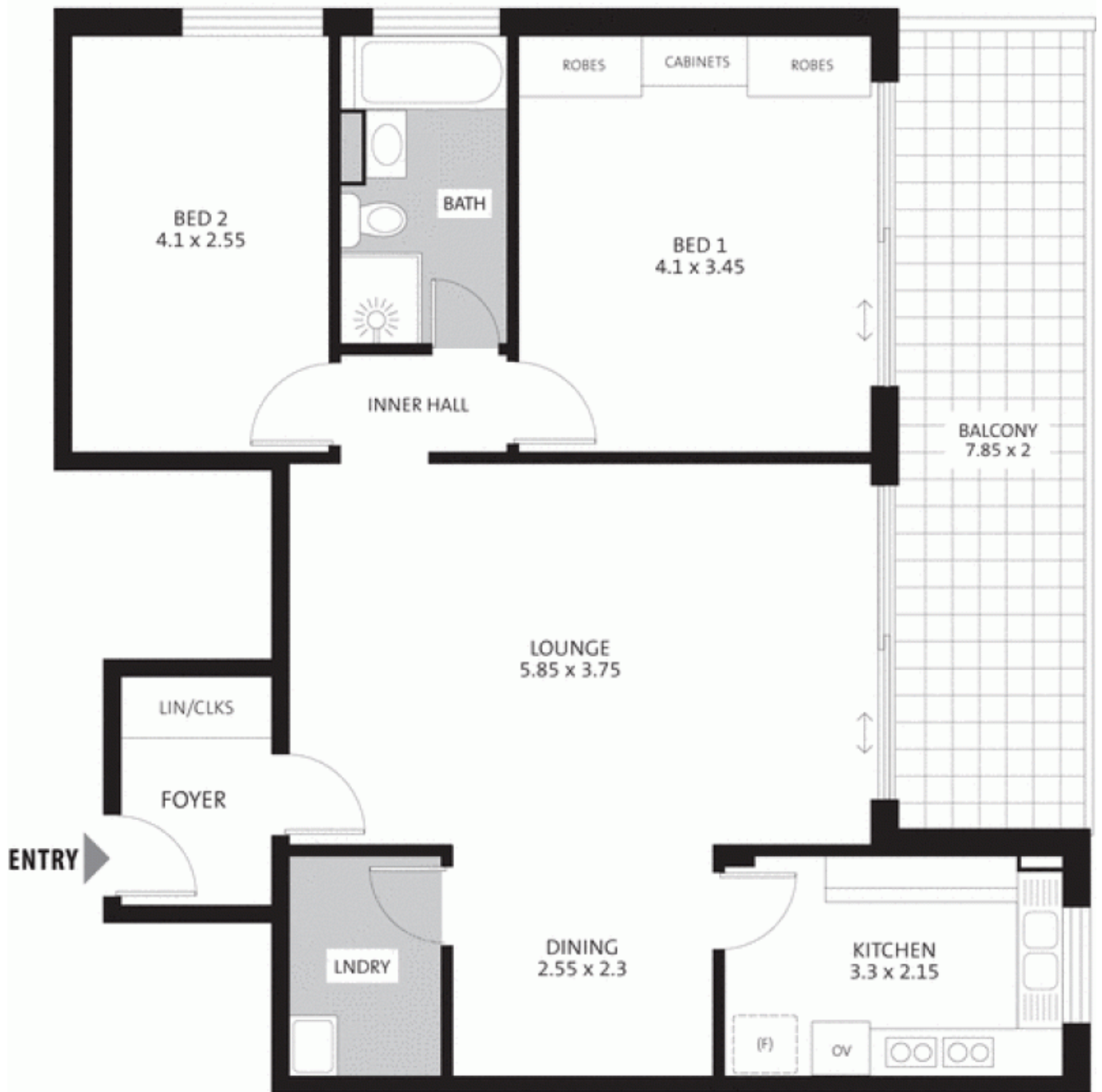
SOLD UNDER THE HAMMER!!!!!!

Positioned in one of Chiswick's most enviable streets, this undercapitalised top floor apartment enjoys a sunny North-Easterly aspect and uninterrupted views of Five Dock and Abbotsford Bays from every room. The generous living area is bathed in warmth and natural light and is further enhanced by an oversized entertainer's terrace overlooking the glistening waters.

Stone Lane Cove

(02) 9427 7466

Chiswick • 23/3B Bortfield Drive

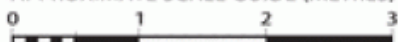


NOT SHOWN: L/UP GARAGE (5.45 x 2.45 approx)
AND L/UP STORAGE (1.67 sq.m. approx)

APPROXIMATE FLOOR AREA	
INTERNAL (INCL. BALCONY)	96 sqm approx
GARAGE	15 sqm approx
STORAGE	1.67 sqm approx
TOTAL	112.7 sqm approx



APPROXIMATE SCALE GUIDE (METRES)



PLEASE NOTE: All dimensions are approximate, and any boundaries shown are approximate indications only. This floor plan is provided to show the layout for marketing purposes only, and must not be relied upon for any other purpose. No liability will be accepted.