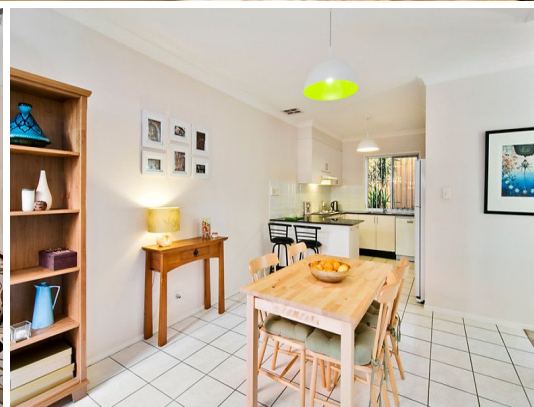


STONE



4/13 Hampden Road ARTARMON, NSW

3 

2 

1 

**SOLD BY REBECCA MITCHELL 0412 257 625**

**Price:**

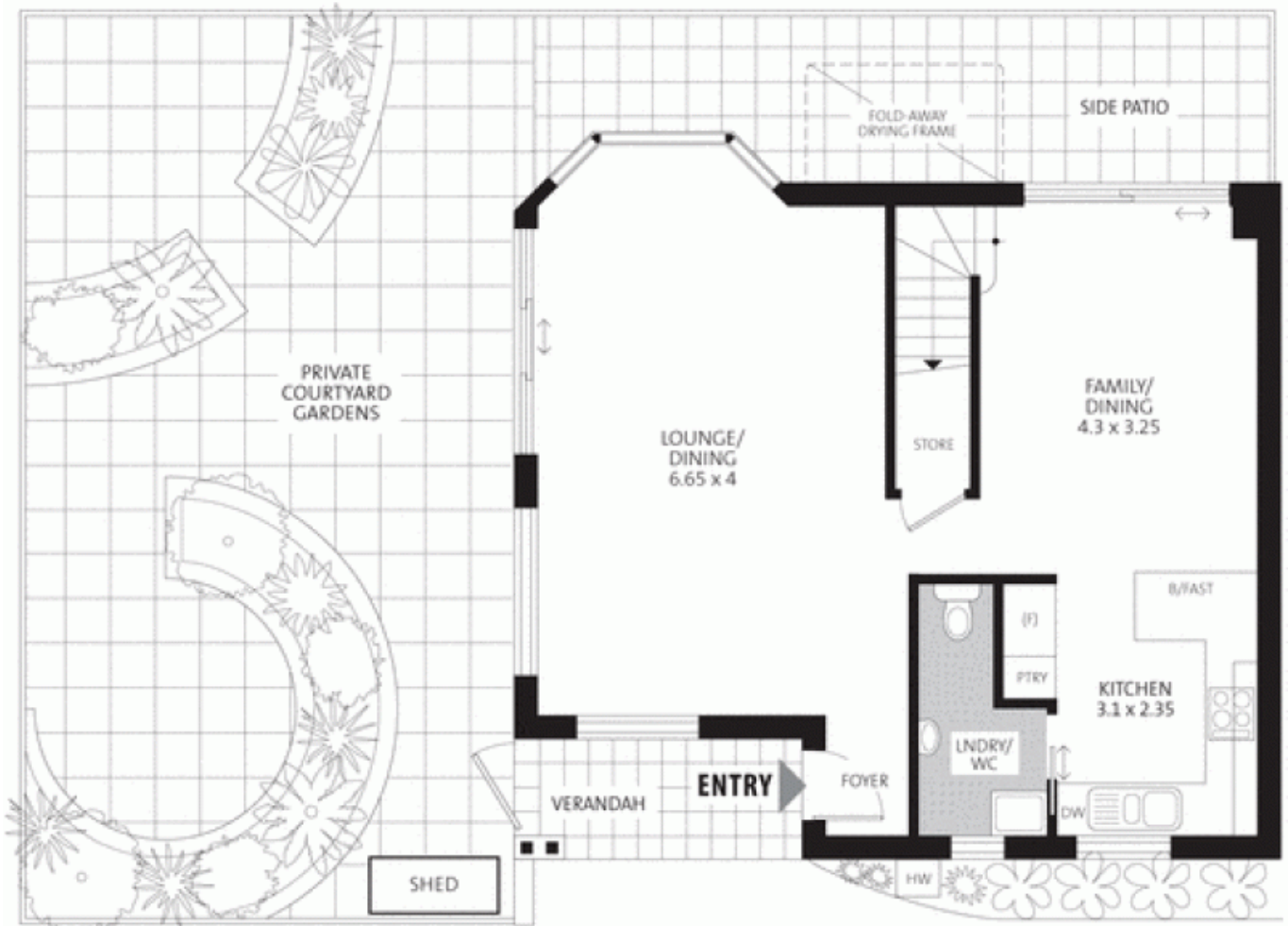
**GENUINE SUBURB RECORD!!!!!!!**

More like a house in its style and proportions, this lavish three bedroom townhouse is located at the back of a boutique block of four, with a leafy aspect across Olive Lane. The massive lounge room with bay window and adjoining sunny North-Easterly facing roof-top garden are an entertainer's dream, combining functionality with contemporary design flair.

**Stone Lane Cove**

(02) 9427 7466

# Artarmon • 4/13 Hampden Road



GROUND FLOOR

FIRST FLOOR

NOT SHOWN:  
L/UP GARAGE

APPROXIMATE FLOOR AREAS:  
INTERNAL (INC. COURTYARDS) 196 sqm  
GARAGE 15 sqm  
APPROXIMATE TOTAL 211 sqm



APPROXIMATE SCALE GUIDE (METRES)



PLEASE NOTE: All dimensions are approximate, and any boundaries shown are approximate indications only. This floor plan is provided to show the layout for marketing purposes only, and must not be relied upon for any other purpose. No liability will be accepted.

