



9/115 Burns Bay Road LANE COVE, NSW

2

1

SOLD BY JOCELYN GREGORY 0418 230 309 & REBECCA MITCHELL 0412 257 625

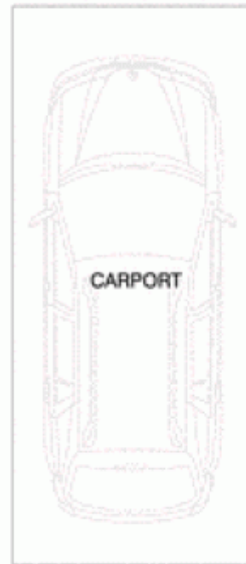
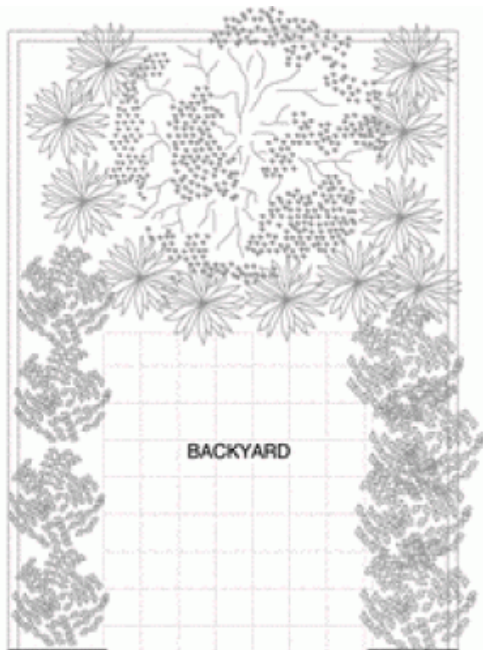
Price:

SOLD!

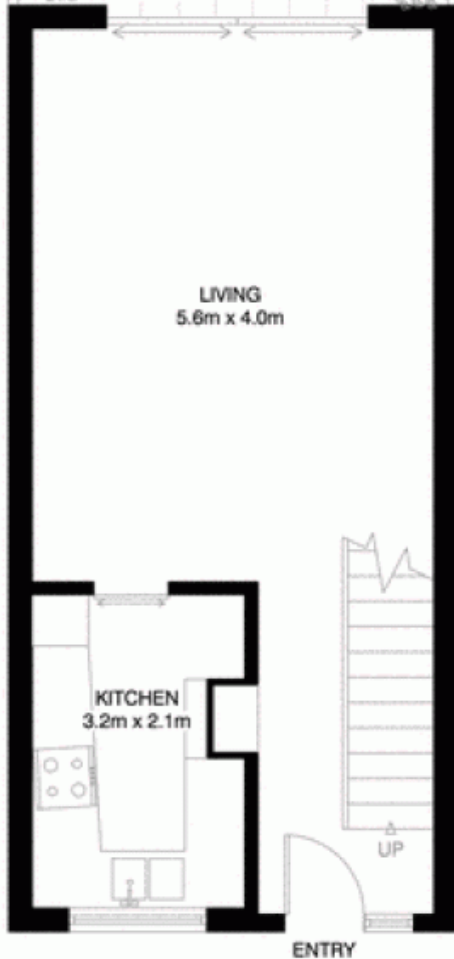
Serene and private and enjoying close proximity to every convenience, this striking, two level, terrace-style townhouse is set well back from the street, only moments from Lane Cove's village centre. Flowing out to a lushly planted north-east facing courtyard, its spacious interiors have been tastefully updated to display an appealing designer edge.

Stone Lane Cove

(02) 9427 7466



(NOT ACTUAL LOCATION)



GROUND FLOOR



UPPER FLOOR

LANE COVE

9/115-119 BURNS BAY ROAD

*INTERNAL FLOOR AREA APPROX 72m²



V-MARK DESIGN PTY LTD
18/75 PACIFIC HIGHWAY
WATSON NSW 2077
OFFICE : 9459 9533
EMAIL : info@v-markdesign.com.au
ABN : 12 109 067 950

*PLANS SHOWN ONLY INDICATIVE OF LAYOUT. DIMENSIONS ARE APPROXIMATE.

Floor plan supplied by V-Mark Design Pty Ltd. This floor plan is provided for indicative purposes only. Measurements are approximate and not to scale. The vendor, agency and supplier will accept no liability for its accuracy. Interested parties are advised to make their own independent enquiries.