

7/300C Burns Bay Road LANE COVE, NSW



**SOLD BY REBECCA MITCHELL 0412 257 625**

Price:

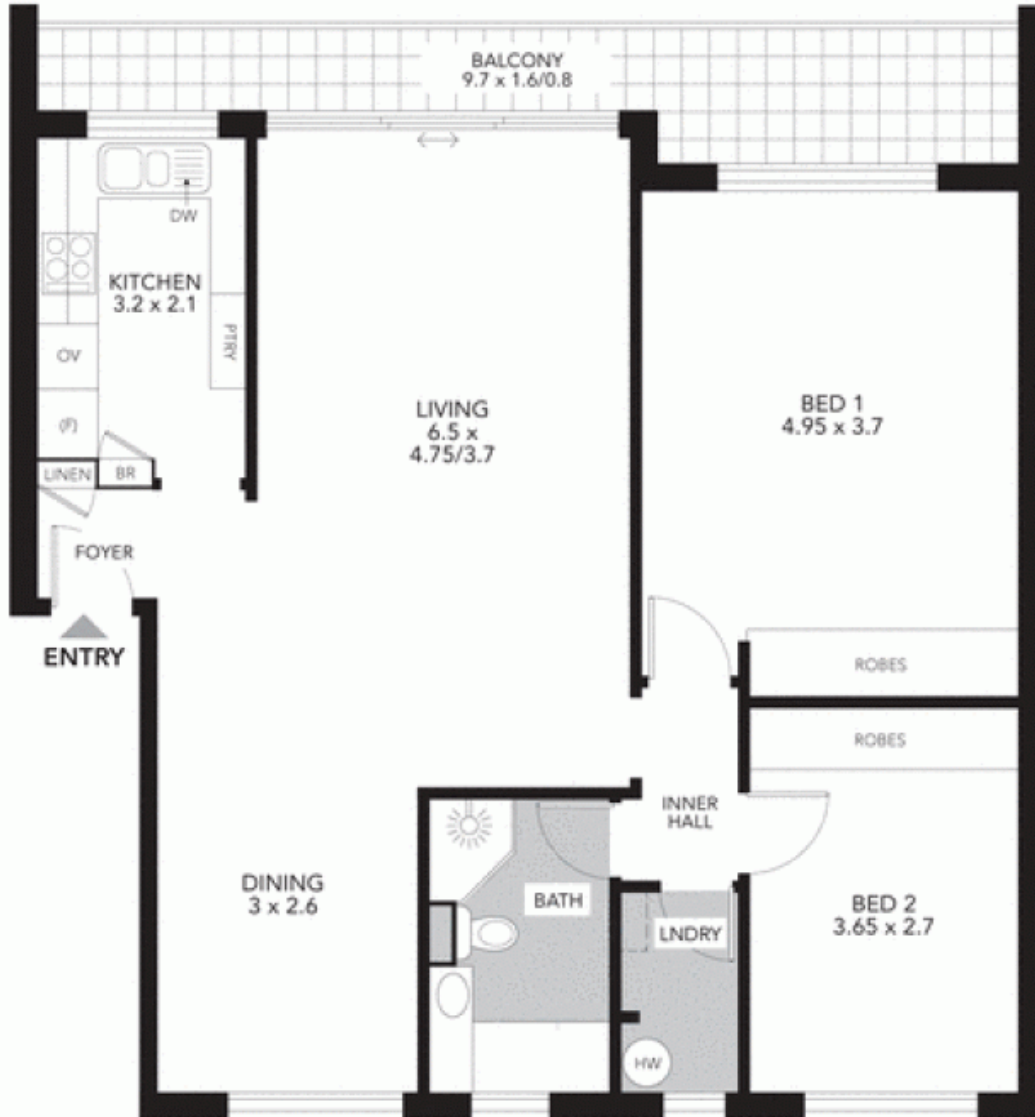
SOLD

In one of the most stunning and private positions in the sought-after 'Marina' building, this freshly presented corner apartment holds an elevated position; breathtaking views of Burns Bay it is surrounded by acres of parks, bushlands, waterfront walks, boat ramps and BBQ's.

**Stone Lane Cove**

(02) 9427 7466

Lane Cove • 7/300C Burns Bay Road



NOT SHOWN: 2 LOCK-UP GARAGES

APPROXIMATE SCALE GUIDE (METRES) 0 1 2 3

PLEASE NOTE: All dimensions are approximate, and any boundaries shown are approximate indications only. This floor plan is provided to show the layout for marketing purposes only, and must not be relied upon for any other purpose. No liability will be accepted.

FLOOR PLANS • DAVID DIXON (02) 9411 7237



Hamilton & Co