



22 The Avenue LINLEY POINT, NSW

4 3 2

**SOLD BY TERASE CALLIGEROS - 0418 245 874**

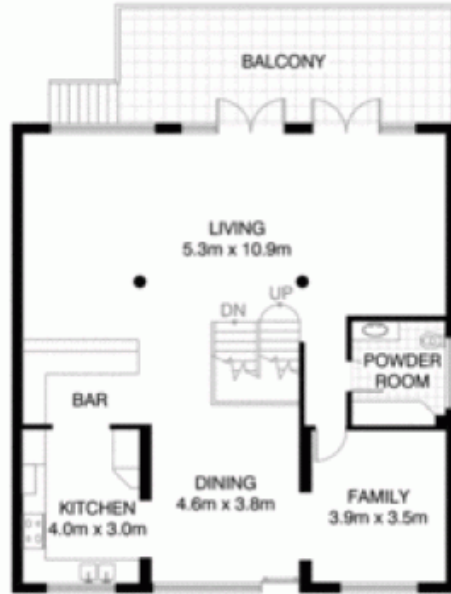
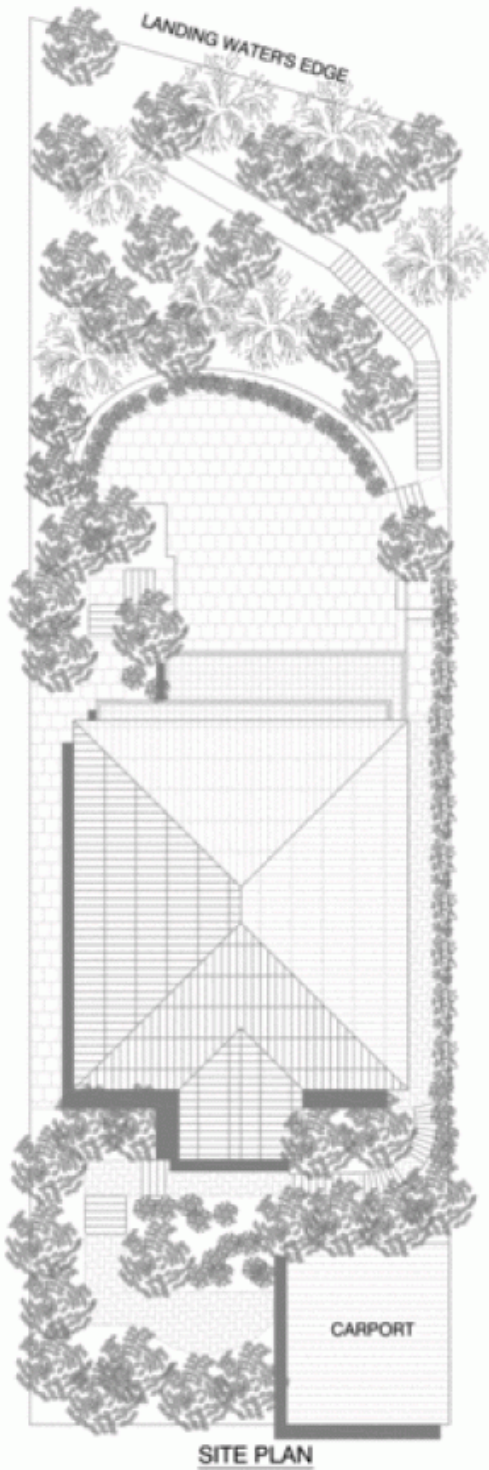
Price:

SOLD by Terase Calligeros 0418 245 874

Revel in the tranquil Lane Cove River panorama from every level of this expansive waterfront residence. An exceptional entertainer with formal and casual living flowing to wide water view decks and terraces, this three-storey executive residence offers a superb family lifestyle in this secluded peninsula position, minutes walk to schools, shops and buses.

**Stone Lane Cove**

(02) 9427 7466



## LINLEY POINT 22 THE AVENUE

\*INTERNAL FLOOR AREA APPROX 334m<sup>2</sup>



**V-MARK DESIGN PTY LTD**  
 18/75 PACIFIC WALKWAY  
 BRISBANE QLD 4017  
 OFFICE: +61 7 3400 9053  
 CELL: +61 7 3400 9053  
 EMAIL: info@v-markdesign.com.au  
 ABN: 12 155 067 952

\*PLANS SHOWN ONLY INDICATIVE OF LAYOUT. DIMENSIONS ARE APPROXIMATE.

Floor plan supplied by V-Mark Design Pty Ltd. This floor plan is provided for indicative purposes only. Measurements are approximate and not to scale. The vendor, agency and supplier will accept no liability for its accuracy. Interested parties are advised to make their own independent enquiries.