



12/242 Pacific Highway GREENWICH, NSW



SOLD BY TERASE CALLIGEROS 0418 245 874

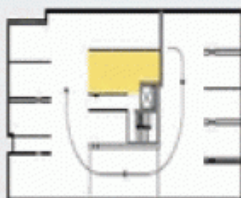
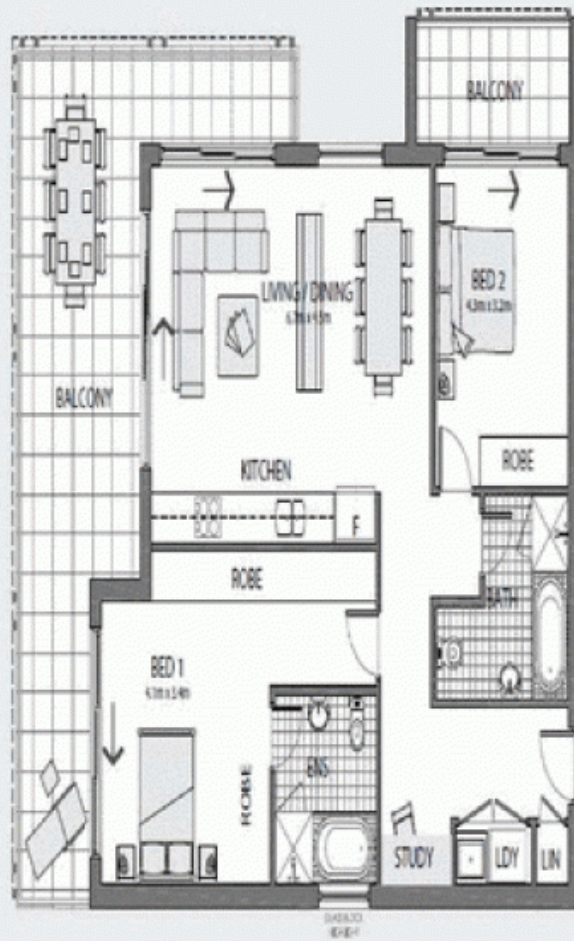
Price:

SOLD

With an emphasis on entertaining and easy living, this exclusive penthouse in a boutique block of 13 will impress.

Stone Lane Cove

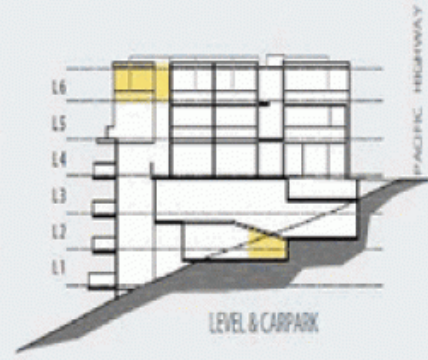
(02) 9427 7466



L2 CARPARK



L6 PLAN



LEVEL & CARPARK



Unit 12	
Approx. Floor Area	90.00m ²
Balcony	35.00m ²
Total Floor Area	125.00 m ²

