



5/1A Centennial Avenue LANE COVE, NSW



Designer two-level living with signature style

Quality design, stylish finishes and good natural light are combined to great effect in this top floor dual-level apartment. Set within a contemporary security complex, it offers a low maintenance designer home with leafy outlooks, a northerly aspect and a highly convenient location with bus transport at the door and Lane Cove village a short walk away.

Air-conditioned open plan living space that leads to a sunlit north facing balcony. Upper level bedrooms both have built-ins and include a main with large ensuite. Modern kitchen with quality appointments, gas fittings and breakfast bar seating. Security car space plus lock-up storage cage and plentiful built-in cupboards. Set in a pet-friendly complex within strolling distance to a choice of parklands. Figtree shops and nature reserves close by, and easy access to the CBD expressway.
 Council rates: \$247.75pq
 Water rates: \$171.00pq
 Strata rates: \$1095.50pq

Price:

Contact Agent



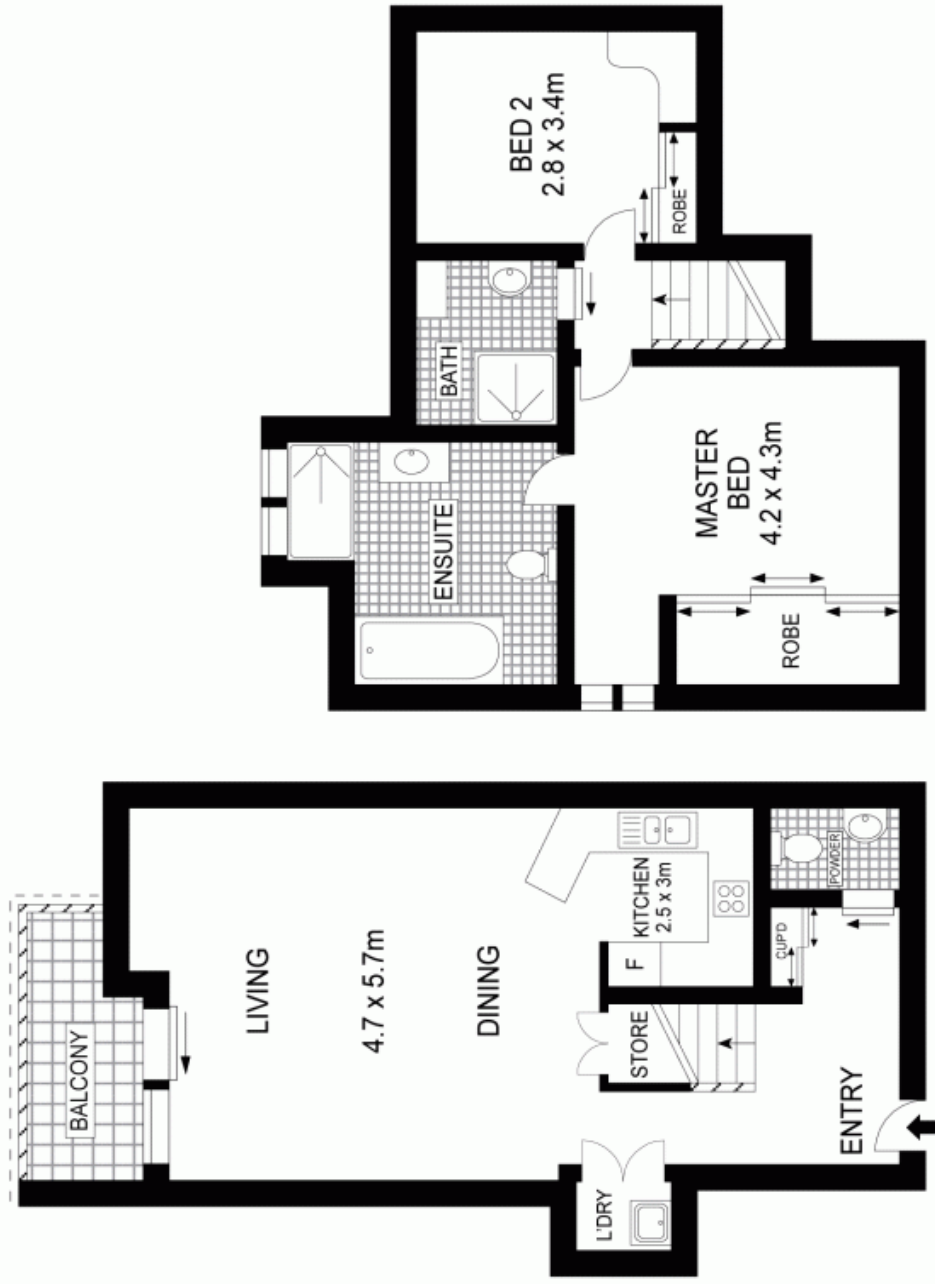
Terase Calligeros

0418 245 874

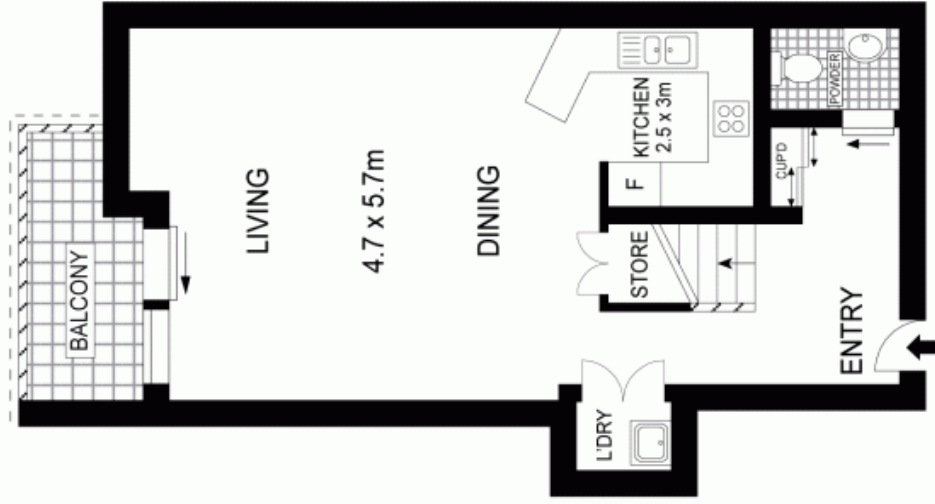


Terase Calligeros

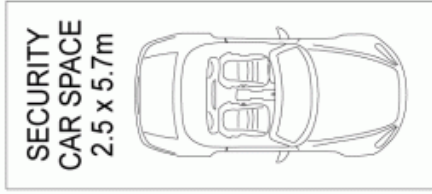
0418 245 874



FIRST LEVEL



ENTRY LEVEL



BASEMENT



SCALE (METRES)

PLANS SHOWN ONLY INDICATIVE OF LAYOUT. DIMENSIONS ARE APPROXIMATE.



5/1A CENTENNIAL AVENUE, LANE COVE