



1/130 Ben Boyd Road NEUTRAL BAY, NSW 1  1 

Ground level apartment makes smart buying

A great entry-level opportunity or investment package into a premium Neutral Bay pocket, this ground floor apartment makes an ideal choice for the budget-conscious whose top priority is a prime location. Set within a small complex of 10, it represents excellent value for money ideal for those seeking a fresh and low-care home with plenty of scope to update and further value-add.

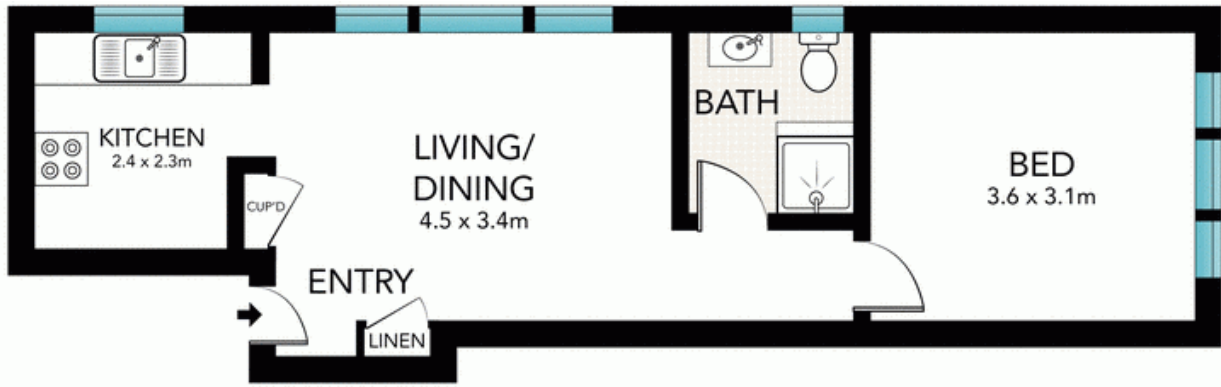
Price:

Contact Agent

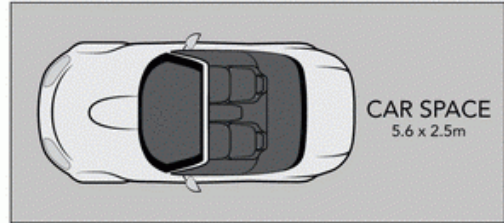


Terase Calligeros

0418 245 874



GROUND FLOOR



SCALE (METRES)

All the information provided has been collected from reliable sources but cannot be guaranteed for accuracy. Interested persons should rely on their own enquiries. All dimensions are approximate and indicative only.



1/130 BEN BOYD ROAD, NEUTRAL BAY

